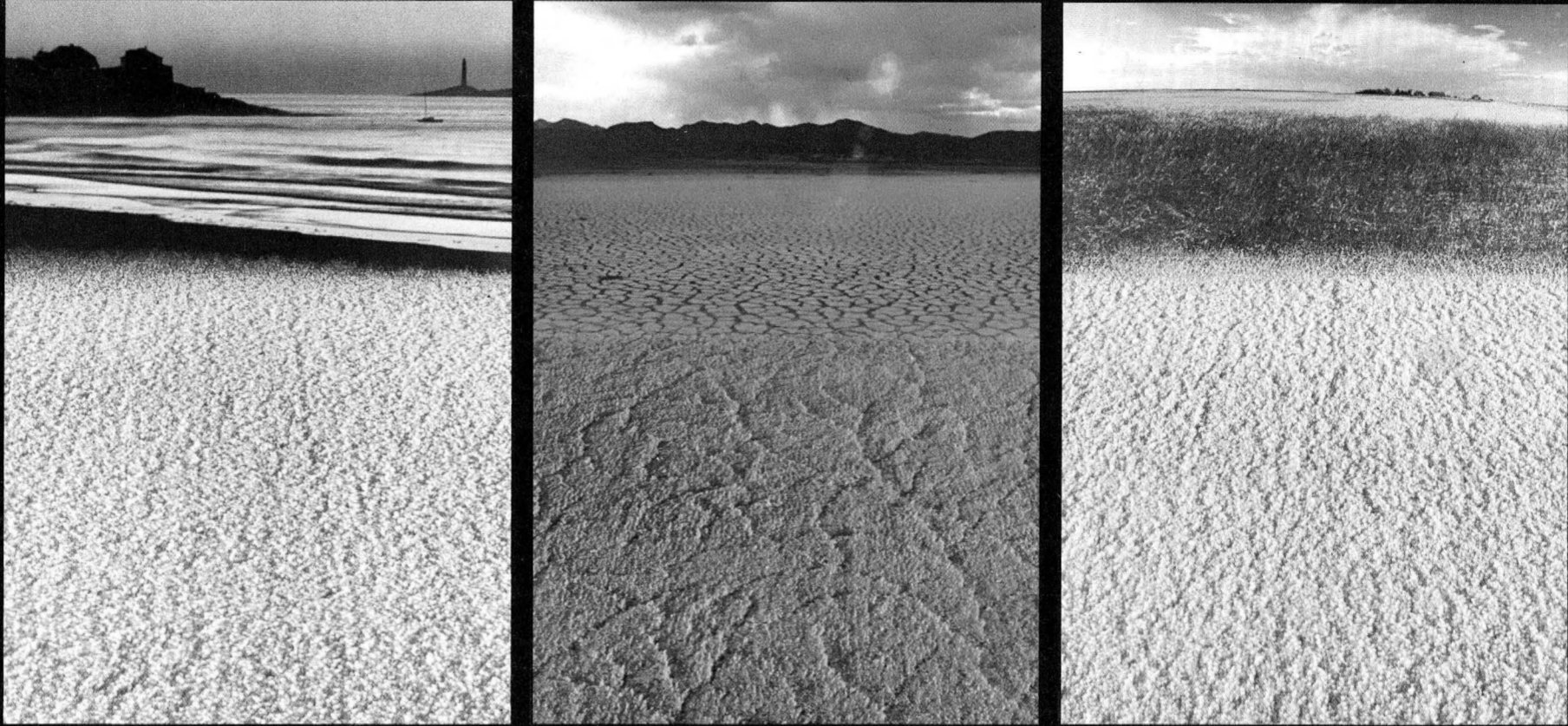


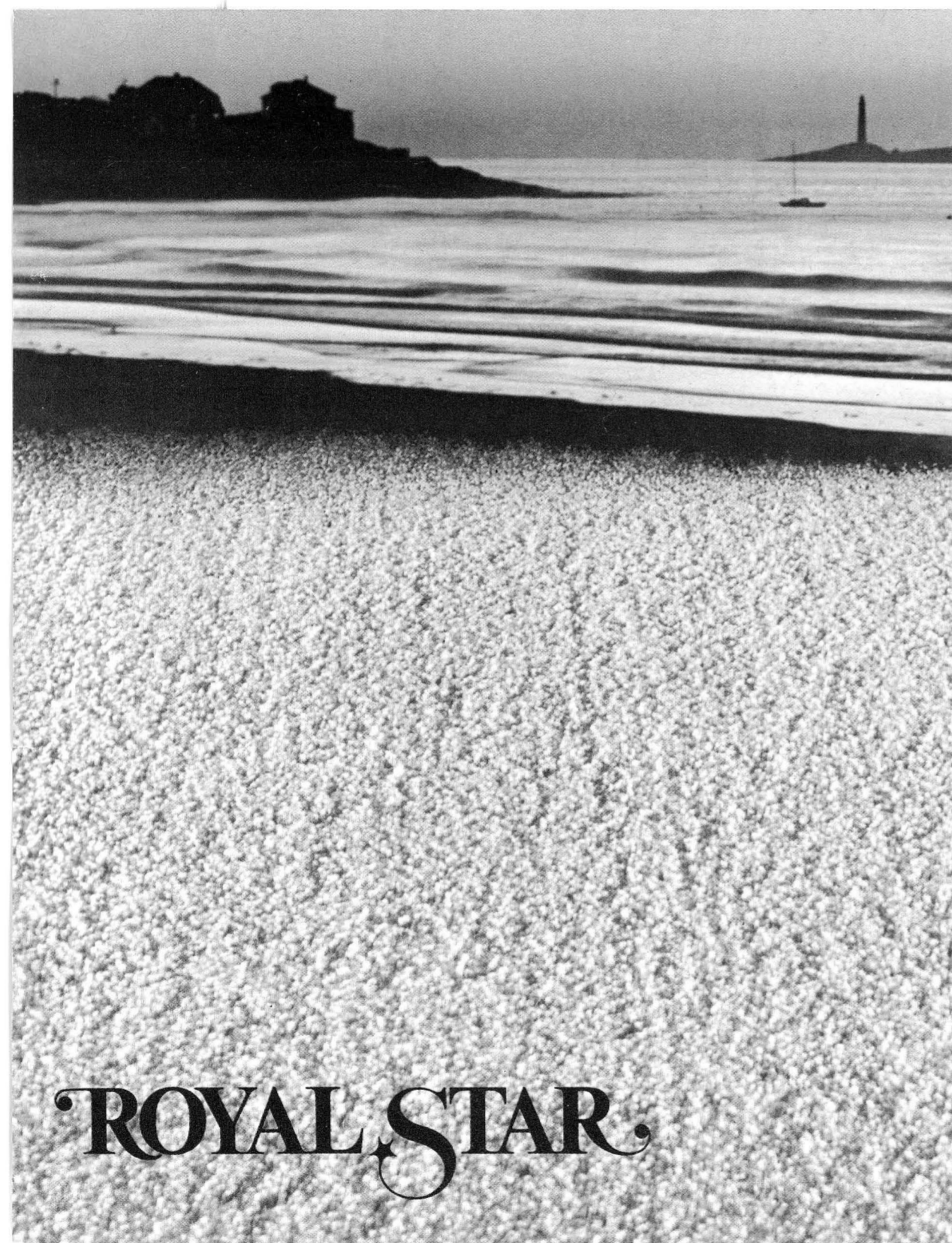
We brought nature closer to home



...with the lushness of Bigelow carpets



Advertising supplement to Winchester Press, 16 September, 1976.

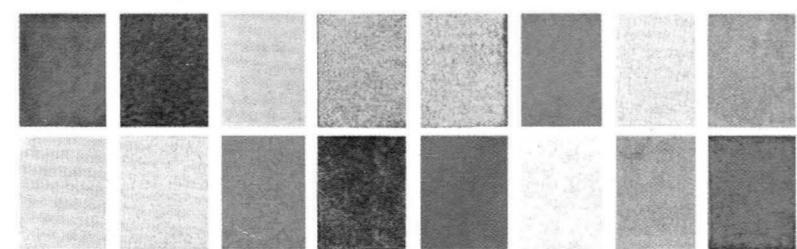


ROYAL STAR

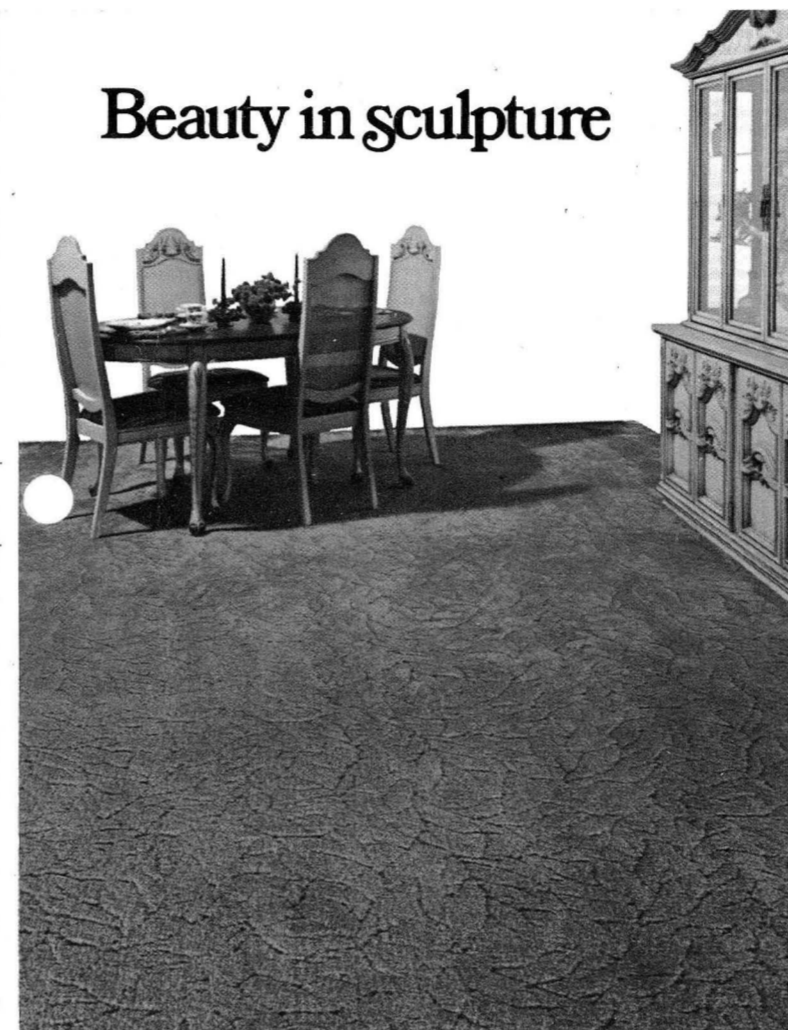
Majesty in colour

The warmth and colour of nature inspired this beautiful Bigelow carpet. Made of unique 100% Trevira Star heat set polyester fibres, this star performer gives you a rich, soft carpet with a bouncy, luxurious feel. The unusual fibres have special qualities which allow prisms of light to reflect colours in richer, purer shades. And they're tested for colourfastness, resiliency and abrasion resistance. Bigelow's ROYAL STAR is your very best buy for beauty, wear and value.

\$13⁹⁵
sq. yd.

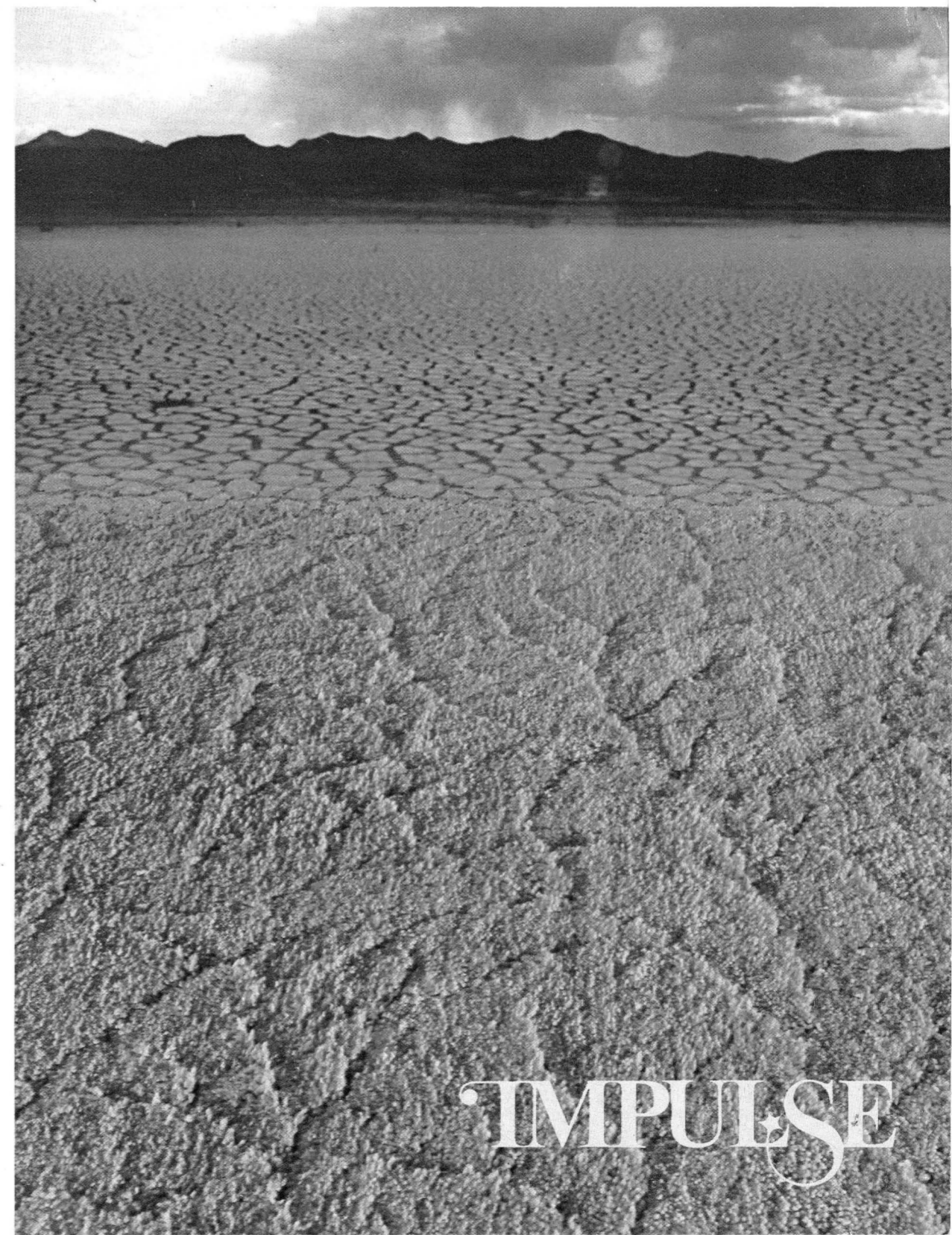
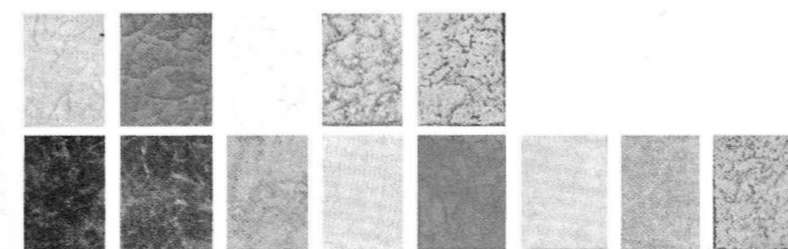


Beauty in sculpture

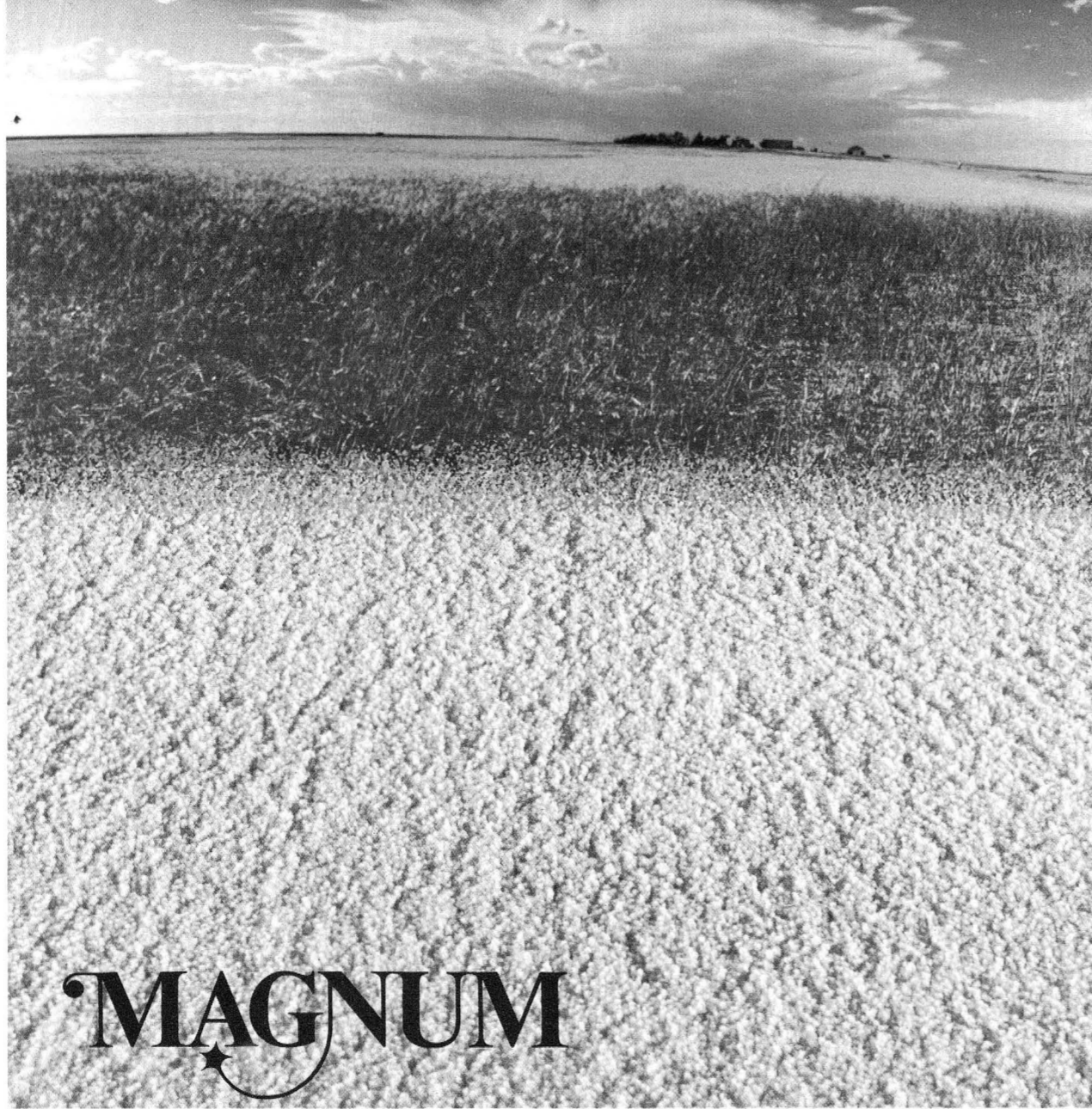


Like nature's own incomparable patterns, this exquisitely carved Bigelow carpet, IMPULSE, is unique in design. Created of 100% Trevira Star polyester fibre, this magnificent carpet will give you years of wear because of its excellent abrasion resistance, true and glowing colours, thanks to the special reflective qualities of Trevira Star fibre. IMPULSE by Bigelow—without peer in its class.

\$18⁹⁵
sq. yd.



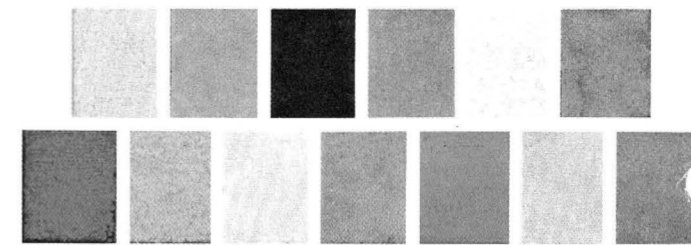
IMPULSE



MAGNUM

Lushness in the wild

As lush and thick as a wind-swept field of Prairie wheat, MAGNUM is manufactured from 100% Trevira Star polyester fibre to give you richer, more lustrous colours. Like all carpets of Trevira Star by Bigelow, it's pre-tested for resiliency, abrasion resistance and colour-fastness. A perfect complement for that special room in your home. Superb! . . . an outstanding value. **\$16⁹⁵**
sq. yd.



O. MAHEU & SONS LTD.

372 Notre Dame, Embrun, Ont.

Tel: 443-2191