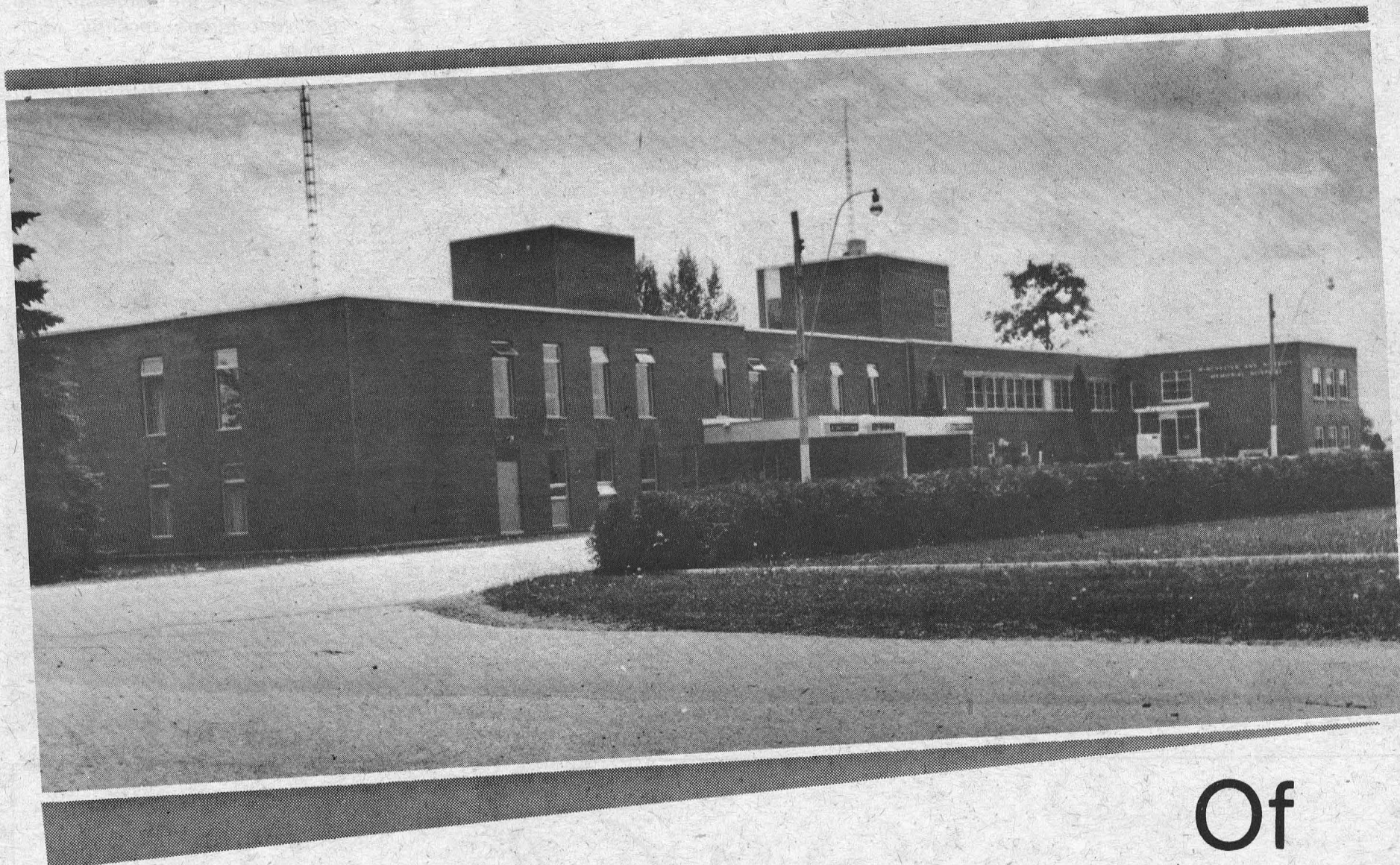


Celebrating
30 Years



Of
Service
To The Community

A Supplement To
The Winchester Press
Thursday, December 7, 1978

Congratulations

**WINCHESTER
DISTRICT MEMORIAL
HOSPITAL**

1948 — 1978



Commemorative Glassware

Stemware is now on sale at WDMH to commemorate the 30th Anniversary of the hospital. The lip of each glass is rimmed with silver while the bowl has a 30th Anniversary emblem on the front and hospital initials and dates of the anniversary on the back.

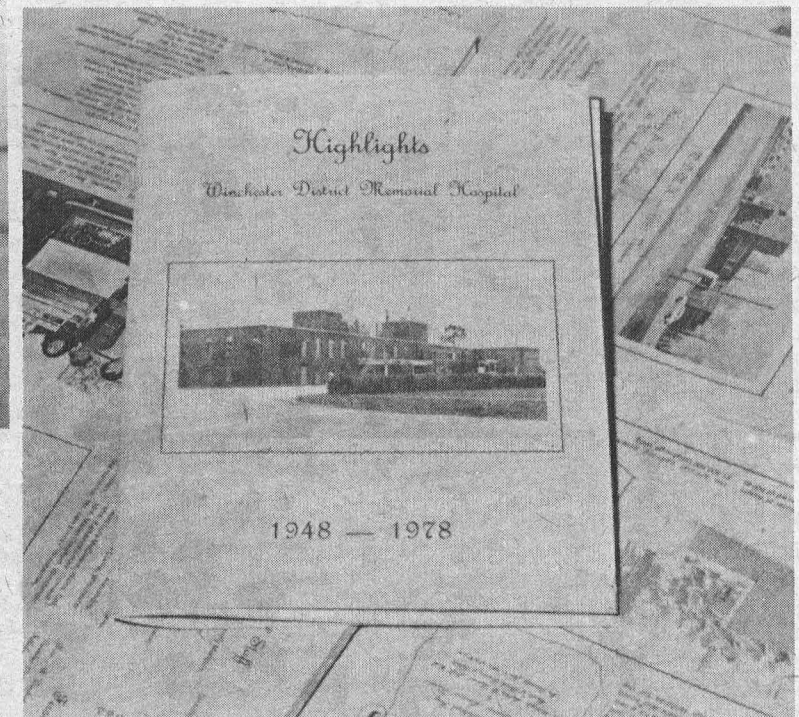
The glasses are being sold by the Women's Auxiliary for \$2 a piece or a set of four for \$6.

Press Photo—Workman

Anniversary Booklets

The official book commemorating the 30th anniversary of Winchester District Memorial Hospital is going on sale Dec. 8. The book highlights the history of the hospital from the days before the laying of the cornerstone to the renovations recently completed.

There are a limited number of copies for sale and they can be purchased at the hospital for \$3.00.



Best Wishes

Winchester District Memorial Hospital

We are fortunate to be the host municipality of the Winchester District Memorial Hospital.

We extend best wishes to the Board of Governors and staff on this their 30th Anniversary celebration.

THE CORPORATION OF
THE VILLAGE OF WINCHESTER

Hospital Board Of Governors

Dr. J. J. McKendry started the ball rolling when he sent a letter to the Editor of the Winchester Press in 1944 stating the need for a hospital in Winchester. It's doubtful if even the doctor realized the effect his letter would have on the people of the area and the tremendous support they would give the new hospital.

Dr. McKendry envisioned a 25-bed hospital in 1944. By 1978, 30 years after the hospital had opened, the hospital had 120 beds, almost a five-fold increase.

To grow as steadily and as much as it has in the past three decades the hospital needed excellent leadership; both administrative and medical.

Much of the leadership, in the long-term and short-term, has come from the Board of Governors, the elected body that oversees the running of the hospital. And much of this leadership has been due to the chairmen of the board, the 10 men who have led the board during the last 30 years.

WALTER C. MacDONALD

It was fitting that Walter MacDonald became the first chairman of the Board of Governors of the hospital since he was one of the most instrumental persons involved in getting the hospital off the ground. He was chairman of the provisional council set up to finance and organize a hospital and when the hospital received its charter in 1946 Walter became the board's first head.

From the start Walter said he would retire when he was 65 and, true to his word, he retired from the board eight years ago. Up until that time he had been chairman of the property committee.

Walter recently recounted many of the events that led to the opening of the hospital; the trips to Toronto, the fund-raising, including the highly successful Ten For Three campaign, the long hours planning and cajoling both populace and politician.

There were also some problems in the early days because, as Walter admits, "We could put a hospital together ... but what the hell did we know about running it?"

However, the hospital survived its growing pains and six years after it opened had a new chairman of the board.

WALLACE D. CARKNER

At the annual meeting in 1954 Wallace Carkner ran against Walter McDonald for the chairman's position. After the first round of votes Walter and Wallace were tied. McDonald withdrew his name and Wallace Carkner became the second chairman of the board of Winchester District Memorial Hospital.

W.J.L. BOYD

Leroy Boyd was one of the men who worked on the provisional council before the hospital received its charter.

Along with men like Norman Beach, Hart Melvin, W. F. Workman and Chester Robinson he helped make the hospital a reality.

Mr. Boyd became chairman in 1959.

ERIC CASSELMAN

W.J.L. Boyd served as chairman of the board until 1963 when Eric Casselman of Chesterville started his two-year term.

During Mr. Casselman's tenure the second major expansion of the hospital was opened. In 1961, a \$700,000 wing was added to the hospital and while Mr. Casselman was chairman the nurses' residence was also opened.

The former chairman recalls the opening of the residence: "I remember it was colder than Sam Hill and everyone nearly froze to death ... the speeches were very short."

He also praises the support given to the hospital by surrounding communities.

"Chesterville did a lot of backing of the hospital even though it was in Winchester," he said. "It was one time everyone forgot their differences and worked together."

GEORGE SUFFEL

In the years between the opening of the nurses' residence and the east wing George Suffel chaired the board of governors. His two-year tenure, from 1965 to 1967, were building years for the hospital.

The hospital received its first three year accreditation, the highest accreditation a medical facility can receive, and George signed the contract for the \$1.3 million east wing.

George said the hardest thing he had to do as chairman was visit Counties Council and request money for the hospital expansion.

"I didn't know any of the members, and I'd never requested the money before. But things worked out all right because we got the money," he said.

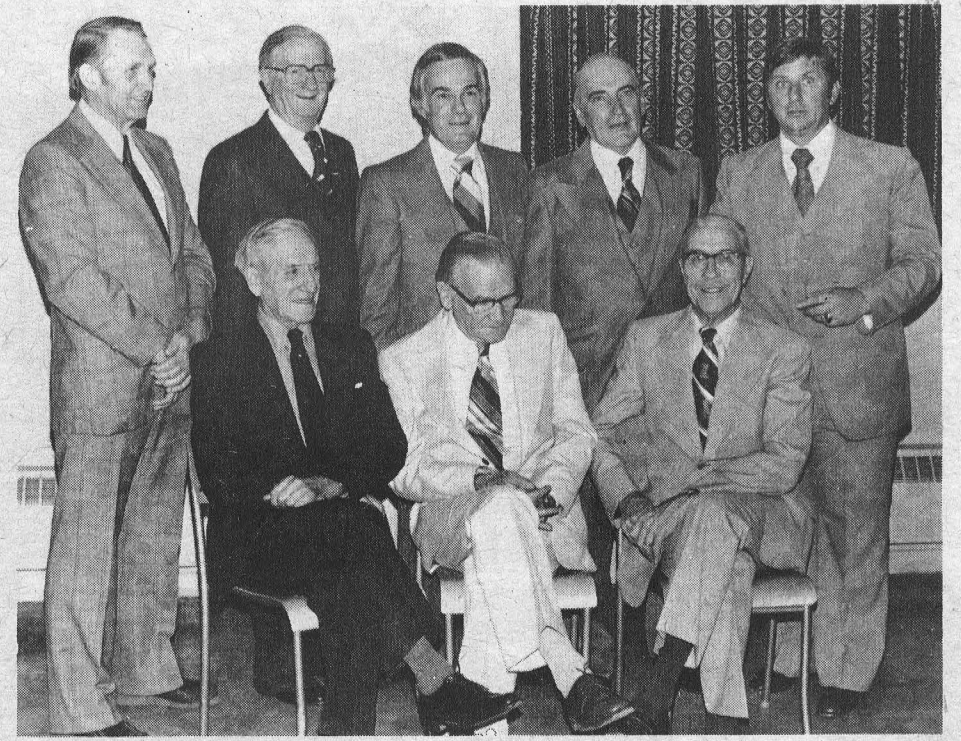
HOWARD BICCU

Howard Biccum has been associated with the hospital from its earliest days but didn't serve on the board until 1957. Then over the 16 years he was chairman of the management, property and joint conference committees and chairman of the board from 1967 to 1969.

On June 1, 1968, the Harvey S. Dillabough wing of the hospital opened. The wing added 42 beds to the hospital, including a 35-bed section for the chronically ill.

Howard said he derived as much satisfaction from the years on the board as he did from any other public office he held. And now, though he always attends the annual meetings, he admits to missing sitting on the board.

Howard retired when he was 69 since board policy won't allow a member of the board to be re-elected after they



Past Chairmen of the Board of Directors are pictured above with Administrator Bert Stel. Standing left to right: George Suffel, Stan Hicks, Reg Workman, George Elliott.

Seated, left to right: Eric Casselman, Walter McDonald, Howard Biccum.

Illness prevented W.J.L. Boyd from being present. Wallace Carkner passed away two years ago.

turn 70.

"We needed new blood anyway," he said.

When it came to finding new members for the board, Howard admitted that at one time it was fairly difficult.

"We have been very fortunate in having good members of the board ... but for a while there was a problem in getting people. Now it's cleared up and the younger members are taking the responsibility very seriously."

STAN HICKS

Stan served as chairman of the board from 1969 to 1971. During his two years as the head of the board the hospital became accredited for a second three year term and Stan became the first chairman of the hospital board to speak at the Women's Auxiliary garden party.

Stan recalled that he almost didn't have a speech to make at the party:

"The speech at the garden party made me sweat more than any other thing during my years as chairman. I had written a speech and gone over it to make sure I knew it then the week before the party The Press published over half of what I was going to say in an article. I decided I was going to go ahead with the general line of what the auxiliary had done over the years anyway ... it worked out rather well because all the other speakers were politicians and talked about provincial and federal matters."

Mr. Hicks is still serving on the board and plans to retire at the end of this term. He says he is going to miss sitting on the board, but leaves without any regrets.

W. R. WORKMAN

After the heady days of the 1960's when the hospital expanded three times, the hospital went through a period of consolidating its gains.

Reg Workman joined the board in 1958 and served as chairman of all the committees before becoming the eighth chairman of the board in 1971. During his two years as chairman the hospital opened a board room and received another three year accreditation.

"It's the most rewarding and the most difficult board in the area to serve on," he said. "You're dealing with a multi-million dollar firm and, before Toronto's role became as great as it is today, you had to look after the dollars and the cents of the whole operation."

Workman admitted that over the years there have been problems at the hospital, but he is just as quick to point out that all problems have always been resolved.

He retired in 1974 because "new

blood" was needed on the board and because he wished to devote more time to his appointment to the board of Ontario Place.

GEORGE E. ELLIOTT

As the hospital grew in the '50's and '60's so, too, was there a need to keep the administration of the hospital up to date.

The board of governors has gone through several amendments of its bylaws including one that states no chairman can serve more than three years in a row.

George Elliott served three years, from 1973 to 1976.

George said the highlights of his term were the accreditation of the hospital and carrying out much-needed renovations.

George, who joined the board in the 1950's, and still serves as chairman of the joint conference committee, has seen many changes in the Ontario hospital system in the past 20 years.

He said the biggest change has been in the out-patient department. George can remember when the department worked on 200 cases a month. Now it goes through 350 cases a week.

ED HANSON

The current chairman of the Board of Governors is Ed Hanson of Williamsburg. Ed joined the board in 1971 and is now serving his third year as chairman.

Ed became the chairman at a difficult time when government belt-tightening forced harsh budget restrictions on Ontario hospitals. Winchester District Memorial Hospital wasn't hit as hard as many hospitals because it has always been efficiently run, but the hospital has had its bed total reduced to 120. When the east wing opened in 1968 the hospital had 128 beds.

"It's been a challenge," he says

when describing what it's like to run a hospital affected by provincial cutbacks. "But the cutbacks show the high esteem the ministry has for the hospital because we've been less affected than most hospitals."

Hanson says in his years on the board the community support for the hospital has been first-class, particularly the Women's Auxiliary.

"I've enjoyed working for the hospital ... everyone co-operates and we have a very good administration," he said.

When he finishes his third year as chairman, Hanson expects to run for another term on the board.

The vice-chairman of the hospital board, and expected to become the 11th chairman of Winchester District Memorial Hospital, is Bill Porteous of Vernon.



Truly A District Hospital — Stel

WINCHESTER—Since its construction, Winchester District Memorial Hospital has evolved as "a real district health care centre," says administrator Bert Stel.

"It is truly a district hospital serving the entire community and the hospital auxiliary is a good example of it," he said in an interview. "The auxiliary is divided into 10 or 12 units that include the whole district."

Stel said representation on the board of governors also indicates the district aspect with members coming from all sections of the community the hospital services — from Mountain, Matilda, Iroquois, Chesterville, Winchester and many other sections.

The 24-member board has 18 elected directors and six are appointed. Each year there is an election for nine directors.

"It's very representative of the area the hospital covers which is a 15 to 20 mile radius from here," said Stel.

"So it has become a truly district health care centre," he added. "Some health care professionals may have come to the conclusion it should not be that way but I still think that it is definitely a community health care centre."

Stel said the changing of the hospital's name is a good example of how sensitive the community at large is concerning the location of the hospital. Originally named Winchester Hospital, it was changed to Winchester and District Memorial Hospital and then simply to Winchester District Memorial Hospital.

Since joining the hospital staff in 1960 Stel has seen and been integral in the implementation of many changes at the 122-bed hospital.

He arrived just after the contract was let for the first major expansion from 30 to 90 beds which cost \$700,000. The Harvey S. Dillabough staff residence located adjacent to the hospital complex was completed during Stel's first year as administrator.

Then the hospital received approval from the Ministry of Health for a major construction program that would eventually be completed in 1968 at a cost of \$1.6 million. That included expanding the hospital with a 35-bed chronic care unit, relocation of the dietary unit and boiler room and the addition of a 16-bed pediatric unit.

After that Stel began working on another expansion proposal that was to include a new incinerator, additional toilet facilities and an intensive care unit. The Ministry of Health didn't

approve that project but told Stel to revamp the entire plan to include new laboratory and x-ray facilities.

But four months later the boom was lowered and Stel was told that there wasn't sufficient government funds available for the project. But Stel and the hospital board persisted and a new, modern incinerator was built in 1972 at a cost of about \$100,000.

But there was a problem shaping up in the x-ray department with a real need developing for new equipment, said the administrator. That developed into the last major renovation program at a cost of \$225,000 that was completed last year.

That project blossomed into a new x-ray room, family lounge, pharmacy and nursing office.

Future developments at the hospital will be directly affected by the Ministry of Health's current financial restraint program, said the administrator.

He said a proposal to install isolated fire circuits and additional smoke barriers resulted from a regular fire safety inspection by the Health Ministry last year.

Although the situation is not critical, Stel said the changes are required by the new safety code. That project has not received Ministry approval yet, he said, and is estimated to cost between \$90,000 and \$100,000.

"It's just proposed, there's no rush," he said. "We'll just try and set it up as a priority for next year."

Stel is particularly happy to be involved in the preparations for the hospital's 30th Anniversary celebrations on Dec. 8.

He sees himself as somewhat of a "political animal" in the sense of dealing with day to day problems and feelings of a large hospital staff.

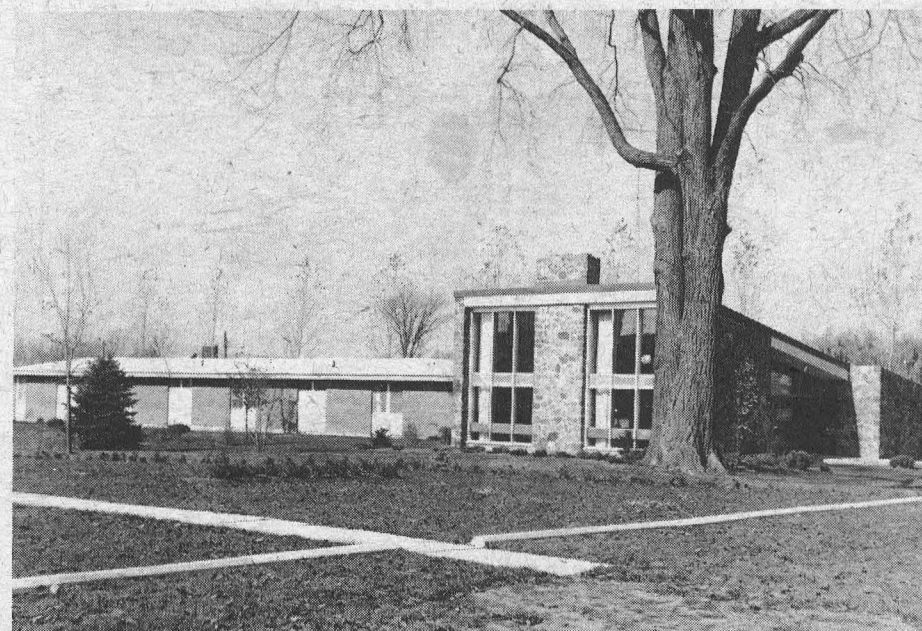
"You try and develop ideas and project the feelings and opinions of others and then work along those lines if you can."

And he's proud of the excellent reputation the hospital has acquired over the years.

"Inside there's not a piece of equipment lacking and we're known for that," he says.

Stel became the chief accountant here on Dec. 8, 1960. While holding that post he took a two-year course in hospital organization and management. He was appointed administrator several years later when John Davis resigned.

Prior to that Stel worked for eight years as an accountant and office manager at Brockville General Hospital.



Nurses' Residence

Funds from the Harvey S. Dillabough estate made possible the construction of a \$140,000 nurses' residence. It was officially opened Wednesday, October 21, 1964 by the Provincial Member for Grenville-Dundas, Mr. F. M. Cass.

Happy

Anniversary

W.D.M.H.

A royal salute to W.D.M.H. on 30 years of efficient service. We are proud to be a part of the hospital community.



Royal Canadian Legion

BRANCH 108

Winchester

Best Wishes

The Winchester Press

extends best wishes to Winchester

District Memorial Hospital

on their 30th Anniversary

of service to the area.

*We at the Press are pleased
to be the printers of the Hospital's
30th Anniversary Book,
now available to the Public.*

THE
WINCHESTER
Press
LIMITED

Winchester



Lions Club Of Winchester

with its continuing
service to the community
has just presented
a \$500.00 donation
to the Winchester District
Memorial Hospital
for the purchase of
Mobile Traction Equipment Cart.

Congratulations to WDMH

on the 30 years of
dedicated service
to the community.



Metcalfe and District Lions Club

extends best wishes to Winchester
District Memorial Hospital on their
30th Birthday. Congratulations to
Board of Governors and Staff for
providing such excellent service
throughout the years.



Gloucester

Congratulations
to the

WINCHESTER DISTRICT
MEMORIAL HOSPITAL

*on the occasion
of their
30th Anniversary
year
of service
to the
community.*

THE CORPORATION OF THE
TOWNSHIP OF GLOUCESTER



*The Township
Of Osgoode*

**extends
congratulations
and
best wishes**

*to Winchester District
Memorial Hospital
on their 30th
Anniversary.*

Women's Auxiliary

Efforts Aid Hospital's Growth

The dictionary defines an auxiliary as an "accessory, aid, ally, assistant, co-adjutor, confederate, helper, mercenary, promoter and subordinate."

Those who have been associated with Winchester District Memorial Hospital, since its formative years some 30 years ago, will readily agree the dedicated group of women, first directed by Mrs. Chester Robinson, has indeed been everything the dictionary suggests it should have been, and much, much more.

Although the hospital itself was officially opened in December, 1948, the Women's Auxiliary had already been operational since the previous August. More precisely it was August 3rd, 1948, the meeting place the Town Hall, where a small group of ladies, aware of the monumental impact the hospital was to have on the entire community, saw the

immediate need of an "auxiliary" force. And in the years to follow, that "force" was to enjoy continuous growth with more and more women of all ages giving generously of time, talent, and often money.

Mrs. Robinson, always an unselfish community worker, was the unanimous choice to lead the fledgling group; Mrs. George Elliott was the first secretary, and the, then meagre, finances were capably handled by Miss Nora Elliott.

Much credit for the organization's tremendous success must go to those who served on that first executive. With amazing foresight they realized they were in a position to be of invaluable service to the young hospital, and proceeded to build an association with an unbending foundation. And on that "foundation" has grown one of the finest hospital auxiliary groups in the

province.

Other members of that optimistic, creative and dedicated executive were: First Vice President Mrs. Milton Walker, Russell; Second Vice President Mrs. Harry Carruthers, Elma; Third Vice President Mrs. Eric Casselman, Cherterville; Sewing Committee Chairman, Mrs. Neil Hutt; Ways and Means Committee Chairman Mrs. W. M. Byers; Press Reporter Miss Emma Gardner; and Refreshment Committee members Mrs. Melvin Scott, Mrs. D. MacLean and Mrs. H. Edgerton.

Very obviously those ladies were well aware the hospital would be ably serving the entire community since, in their wisdom, executive members were chosen from outlying areas. Initially auxiliary members perhaps saw themselves as a volunteer group prepared to offer service for such menial tasks as making curtains, other sewing needs and, when called on, doing other demanding chores.

Thirty years later the "busy bees" look back on years of tremendous accomplishment, and no recuperating patient or visitor can leave the hospital without having come in contact with some phase of service made possible by the auxiliary.

The list is almost endless but some tangible results of auxiliary efforts are the waiting room Showcase; Tuck Cart; Library; Kitchen facilities; furnishings in nurses' residence; equipment in new wing operating room; heart machine; and a host of other requirements made possible because the

"ladies" always refuse to say "No."

Winchester District Memorial Hospital is recognized as the finest of its size in the entire province, perhaps in all of Canada. The vast community relying on the skills and dedication of doctors and nurses is indeed well aware the hospital staff enjoys, appreciates, and looks for the encouragement, assistance, and financial help always assured by what might be called a "female regiment" always ready to "march" when a need arises. Prepared to do just a little more than is expected, they anticipate no glory, no honour, no money. It has been said Florence Nightingale was "an angel of mercy." Members of Winchester District Memorial Hospital Auxiliary, although not nurses, may indeed be entered the annals of time as "working angels."

PAST PRESIDENTS

Those who have directed operations through the years and who succeeded the initial president are: Mrs. Raymond Summers, Mrs. Lyle Marcellus, Mrs. F. M. Cass (four terms), Mrs. R. D. Ledgerwood (two terms), Mrs. Percy Roberts (two terms), Mrs. Melvin Black (two terms), Mrs. M. W. Locke (two terms), Mrs. John Campbell (two terms), Mrs. Gerald Gilbert (two terms), Mrs. William Byers (two terms), Miss Gladys Bayne (two terms), Mrs. Colin MacGregor (two terms), Mrs. Keith Carkner, Mrs. E. L. McCartney (two terms), Mrs. Irene Wallace (two terms), and the newly elected president Mrs. Louise Sloan.

Poem Found In Hospital Locker

This touching poem found in the hospital bedside locker of an old lady after her death, may give many of us cause to ponder the real quality of life for the aged. It was rescued by Mrs. T. Cowan of Highgate Hill, who does geriatric nursing.

What do you see nurses, what do you see?
Are you thinking when you are looking at me--
A crabbit old woman, not very wise
Uncertain of habit, with far-away eyes,
Who dribbles her food and makes no reply
When you say in a loud voice, "I do wish you'd try."
Who seems not to notice the things that you do
And forever is losing a stocking or shoe,
Who, unresisting or not, lets you do as you will
Is that what you're thinking? Is that what you see?
Then open your eyes nurse, you are not looking at me.
I'll tell you who I am as I sit here so still,
As I move at your bidding, as I eat at your will,
I'm a small child of ten with a father and mother,
Brothers and sisters who love one another,
A young girl at sixteen with wings on her feet
Dreaming that soon now a lover she'll meet,
A bride soon at twenty, my heart gives a leap,
Remembering the vows that I promised to keep.
At twenty-five now I have young of my own
Who need me to build a secure, happy home.
A woman of thirty, my young now grown fast,
Bound to each other with ties that should last.
At forty, my young sons, now grown, will be gone,
But my man stays beside me to see I don't mourn,
At fifty, once more babies play round my knee,
Again we know children, my loved ones and me.
Dark days are upon me, my husband is dead,
I look to the future, I shudder with dread,
For my young are all busy rearing young of their own,
And I think of the years and the love that I've known.
I'm an old woman now and nature is cruel,
'Tis her jest to make old age look like a fool,
The body it crumbles, grace and vigour depart,
There is now a stone where I once had a heart,
But inside this old carcass a young girl still dwells,
And now and again my battered heart swells.
I remember the joys, I remember the pain,
And I'm loving and living life all over again.
And I think of the years all too few -- gone too fast
And accept the stark fact that nothing will last.
So open your eyes nurses, open and see
Not a crabbit old woman, look closer -- see me!

From the Bulletin of the
Kinette Club of Sarnia.

With so many Kinette Clubs doing Service Work with Senior Citizens, we thought this poem would interest you. Convenor Lynn Thomas.

Trend Towards Ambulatory Care

WINCHESTER—Like all other hospitals throughout the province, Winchester District Memorial Hospital is moving quickly towards a changing medical role.

Administrator Bert Stel said in an interview with The Press that a current trend toward more ambulatory care — where patients are cared for more on a day basis — is affecting the role of this hospital.



Administrator Stel

"The trend has already started where certain surgical procedures involving the patients coming in during the morning and going home to recuperate on the same day is occurring," said the

administrator.

These day care surgical procedures include teeth extractions, laparoscopic and gastroscopic procedures and rectal surgery, he noted, and will probably increase further in the future.

Out-patient and emergency care is also on the increase, he said, and because of the general reductions of the length of patient stays the overall occupancy rate of the hospital is beginning to decline slightly.

"It will ultimately result in a decrease of the active treatment beds," noted Stel.

In 1968 the hospital "opened its doors" to service and health care organizations, he said, which helped greatly to reduce the "closed in" nature of the health care community.

Since then allied health organizations like the Red Cross blood donor clinics, the home care program, the home-makers program, the Victorian Order of Nurses and the Dundas County Association for the Mentally Retarded use the hospital facilities for meetings and special projects.

"The hospital truly opened its doors to become a community health care facility for the whole area," he said. "We've now reached the point where the facilities are barely adequate to cope with the whole spectrum of activities."

Stel said one organization that has become "dear to my heart" is the women's hospital auxiliary.

"If you want to have an auxiliary to support your hospital you must first give them support."

Congratulations
to the
WINCHESTER
DISTRICT MEMORIAL
HOSPITAL
From
Winchester Township

In reviewing 30 years of
close association, the Township
of Winchester commends
Winchester District Memorial Hospital
for its excellent care,
efficient operation and
advanced techniques.

May these attributes
serve you well in the
next 30 years.

MUNICIPALITY OF THE
TOWNSHIP
OF MOUNTAIN

extends

Best Wishes

to Winchester
District Memorial
Hospital

*We are proud
to be a part of the community
served by
the hospital*

The Municipality
Of The Township of
FINCH

extends congratulations to

Winchester
District Memorial
Hospital

on the distinctive role
it has played in health care
in this district

*Congratulations to
Winchester District
Memorial Hospital
on the occasion of
their 30th Anniversary
Celebration.*

Township Of
Roxborough