

Ottawa Valley Farm Show

Lansdowne Park, Ottawa
Tuesday, Wednesday, Thursday

March 30 - April 1

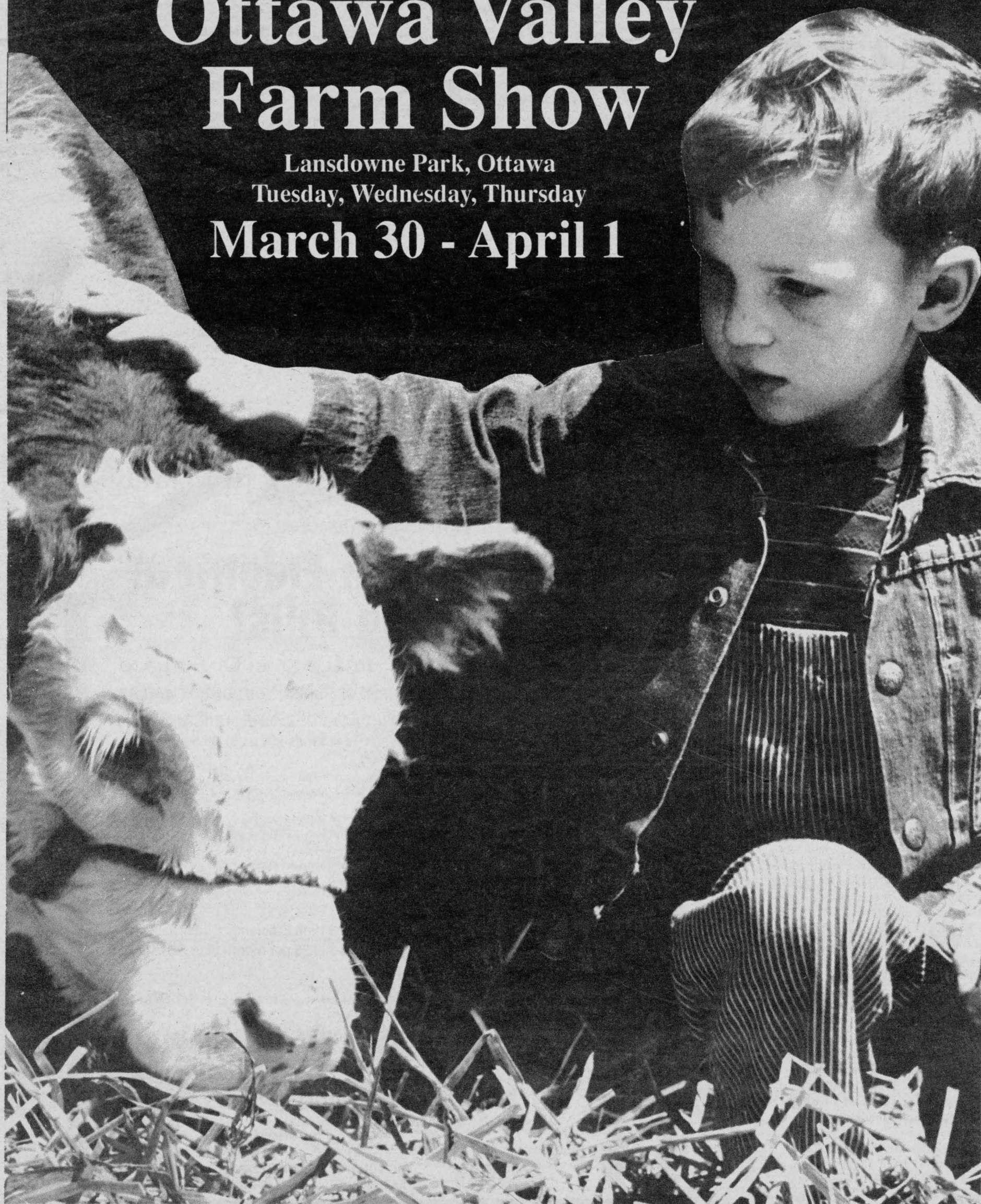
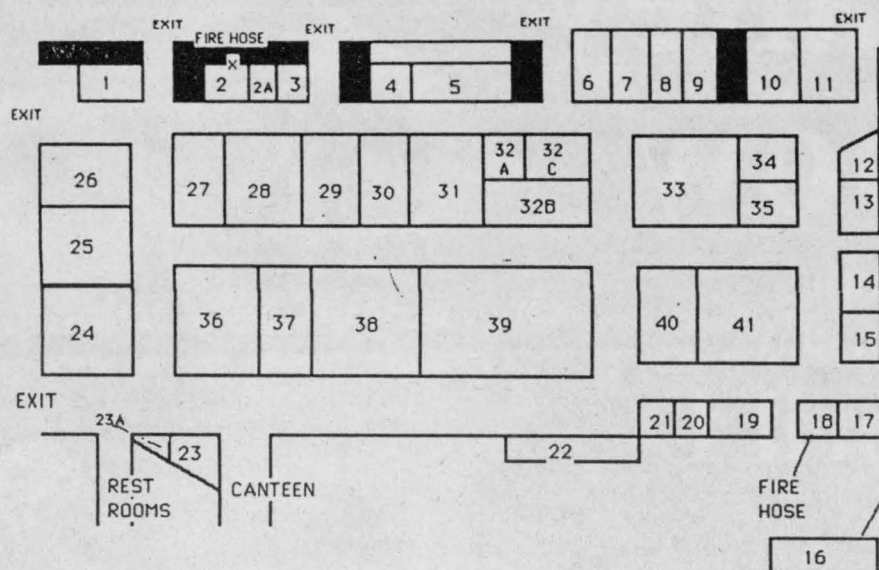


EXHIBIT HALL

Displays from 1 to 100
Ottawa Valley Farm Show



NAME

Acres Equipment
Agriculture Employment
Alfa-Laval Limited
ALO Canada
B.S.M. Ltd.
Berg Equipment Co.
Big "O" Inc.
Canadian Oxygen Limited
Canadian Vitamineral
CJET
Darnell Nuhn
Eastern Breeders
Eastern Farm Machinery
Farmers Finder
Fiat Tractors
Ford-New Holland of Canada
Gehl Company
H. Kuntz Manufacturing
Hyland Seed Div.
J-Star Industries
J.I. Case Canada Ltd.

BOOTH NAME

40 Joseph A. Thomas
17 Kubota Canada Ltd.
4-5 Liquid Feeds International
31 Market Farm Equipment
13 McIntosh Equipment
29 Motokov Canada Inc.
2 Norcan Farm Equipment
1 Old Fashioned Fudge
2A Ontario Dairy Herd Improvement
21 Ontario E.P. Lubricant
11 Ontario Machinery Ring
22 Ontario Plowmen's Assoc.
41 Ottawa Valley Farm Show
23A Ottawa Valley John Deere
37A Pioneer Hi-Bred Limited
24-25 Pride Brand Seeds
27 Robert H. Laning & Son
18 S.I. Feeders (Evans Ag.)
16 Tayeba Deer Farm Inc.
36 Timmins Agri System
39 Universal Tractor

BOOTH

32A
28
35
34
26
30
32B
23
12
9
32C
20
10
38
14
19
37
6-8
3
15
33

Over 200 exhibitors guaranteed

This year the Ottawa Valley Farm Show will be welcoming over two hundred exhibitors along with over 25,000 visitors. On display will be over \$7 million worth of new and innovative farm equipment for the new year.

Traditionally the Ottawa Valley Farm Show will feature the Championship Seed Show with competitors and exhibitors from all over Eastern Ontario and Western Quebec. Also for those hoping to buy the very best, the sale of pedigreed seed will take place on Thursday morning. The seed will be sold by auction with the proceeds going to the Children's Hospital of Eastern Ontario.

The highlight in the upper annex again this year will be the show and sale of some of the finest cattle to be found in Eastern Ontario. Most of the prominent lines of beef and dairy cattle will be exhibited.

Be sure to pick up your coupon at farm dealers all over the area giving you a two-dollar saving on the admission price. Thousands of these coupons are now available at farm suppliers and outlets, and from farm clubs and organizations.

Help celebrate the 100th anniversary of the giant 22,000 pound cheese that was made in Perth and displayed at the World's Fair in Chicago. Enjoy a taste of a freshly prepared sample, made especially for the farm show.

Show dates are Tues., and Wed., March 30, 31 from 10am to 10pm and Thurs., April 1 from 10am to 5pm. Admission is just \$6 (save \$2 with coupon).

'Get Under Our Umbrella'

Tired of High Electrical Heating Bills?

Convert Your Electric Furnace to an Oil Furnace

RENT

BUY

BUY

TIRED OF RUNNING OUT OF HOT WATER?

RENT a New Oil Fired High Efficiency Hot Water Tank for as low as \$7.95 per month plus GST

- Includes installation and full-service contract
- Save \$180 to \$240 on your annual electric hot water costs

BUY a New High Efficiency Oil Furnace

- Now, no chimney required
- Includes 24-hour emergency service and parts and labor for two years at no cost to you
- We will finance up to two years interest free
- Pay cash and receive one extra full year of free service

BUY a New High Efficiency Oil Furnace for as low as \$39.95 per month plus GST for 60 months

- Now, no chimney required
- Includes 24-hour emergency service and parts and labor for two years at no cost to you

OUR WRITTEN GUARANTEE

If you are not happy after one year, we will replace your new oil fired equipment with electric equipment at no charge to you, with no hidden costs. Effective January 1, 1993.

WINCHESTER-CHESTERVILLE FUELS

A Division of Universal Terminals Ltd.
Heating • Air Conditioning • 24-Hour Service
After hours, 1-800-267-8187

WINCHESTER
774-3560

IROQUOIS
652-4565

CHESTERVILLE
448-2182

IT PAYS TO HEAT WITH OIL

• Over 47 Years Local Service •



Selling machinery

Representatives of Eagle Farm Equipment in Winchester discuss tillage equipment with visitors to the Chrysler Farm Show held March 2-4.

Press Photo — Fetterly

Know your limits

Reaction time begins with a message to the brain, and ends when the body makes a response.

It takes time for the brain to receive a message and tell the body to take action. The best human reaction time is slow compared to high-speed machinery. Under ideal conditions, we take about one-third second to react.

- If the snapping rolls of a corn harvester are moving material at 12 feet-per-second, a stalk would travel nearly four feet in the time it takes a human to react. Someone trying to unplug the header would likely be pulled into the machine before they could let go.

- When an operator realizes that his loader tractor is turning over and begins lowering the bucket or taking some other corrective action, it will probably be too late. Rear overturns can rarely be stopped within the span of human reaction time.

- Gear and belt drives, feed rolls and PTO shafts turn at dangerously high speeds. Upon sensing danger, a person is rarely able to react quickly enough to avoid entanglement. That's why it's so important to maintain proper shielding, and to always shut off power before working on equipment.

Reaction time is slowed when you are affected by factors like fatigue, medication, alcohol, and preoccupation. It may be considerably lengthened in a panic situation. For example, having a co-worker caught in a machine can shock a person so much that they can't think clearly enough to stop the equipment as quickly as normal.

Think about how you would react to various emergencies before you are exposed to them. This may help you react more quickly should an emergency occur.

(The above information was derived from the Deere & Company publication, "Agricultural Machinery Safety.")

Agriculture Minister to address audience at seed growers' banquet

Federal Agriculture Minister Charles Mayer recently announced he will be attending the Ottawa Valley Farm Show on Wed., March 31. He will address the winners of the Seed, Feed and Forage Show along with the directors of the Ottawa Valley Seed Growers in the midst of their 66th annual show.

The Ottawa Valley Farm Show will be held this year at Lansdowne Park in Ottawa on March 30, 31 and April 1.

Over 200 exhibitors displaying products from over 1,000 farm companies and manufactures will fill the two floors of the Annex Building, the Coliseum, and all of the salons in the exhibit hall. Over 50 displays will be set up outside again this year as an expected crowd of 25,000 will fill the display area.

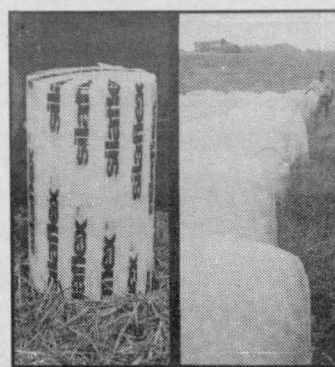
One of the features this year will be

a commemorative display observing the 100th anniversary of the 22,000 pound mammoth cheese that was made in Perth and sent to the World's Fair in Chicago. Visitors will be given a small sample of the fine cheese presently made in Eastern Ontario.

More features that make the Ottawa Valley Farm Show different from other such shows in Canada are the sale of pedigreed seed, the live cattle shows and sales, the exciting championship seed show that brings winners in from all over Eastern Ontario, and Western Quebec.

Usually farmers don't get too many holidays but this is one break most of them look forward to. A chance to kick tires on new products, chat with old friends and find out what's new for '93. The annual Ottawa Valley Farm Show is just a few days away.

Your Bale Wrapping Headquarters at the Ottawa Show



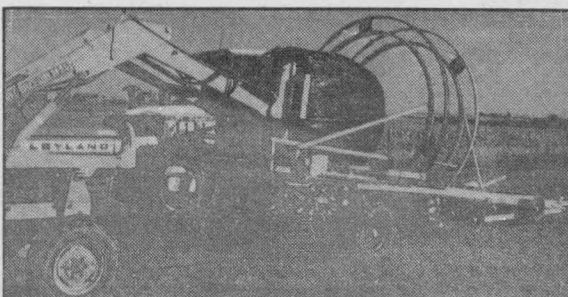
BALE FILM

Selling only quality North American and world-proven Silaflex film at Distributor Direct Prices. Your forage deserves only the best!

WRAPPERS

The best selection in Ontario! Individual wrappers, multiple in-line, automatics, and large square bale wrappers. Let us tailor a wrapper to your operation.

GRAYS BRITISH BUILT FOR BRITISH FARMS

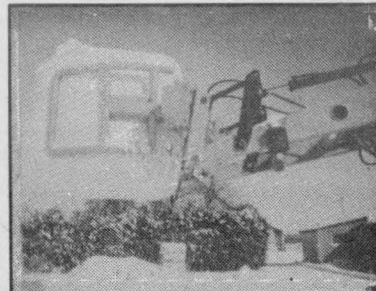


FEATURING

Gray's Tubeline - The only continuous in-line wrapper with dual hoops for positive, accurate wrapping necessary for mold-free forage preservation.

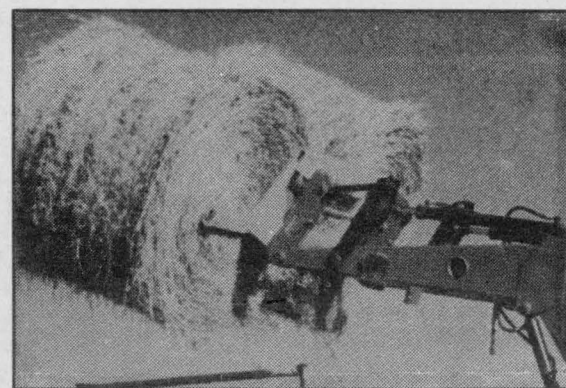
CORRY UNVEILED AT OTTAWA ROLL-OFF

The fastest individual wrapper in North America. Wrap in under 30 seconds. Lowest price in its class - anywhere!



BALE HANDLING

BALE-EZE Grabs, Unrollers, Handlers and Multi-Movers. Let us show you how to increase your bale handling efficiency.



WRAP RITE

HAY SYSTEMS LTD.

SEE US OUTSIDE
AT THE FARM SHOW

Wrap Rite Hay Systems Ltd.

RR2, Brockville, Ont., K6V 5T2
Telephone 613-926-2372

Fuel storage

All underground fuel storage tanks installed prior to 1974 were required by law to be removed by December, 1991. Underground tanks are still allowed in Ontario, but they must have proper cathodic protection.

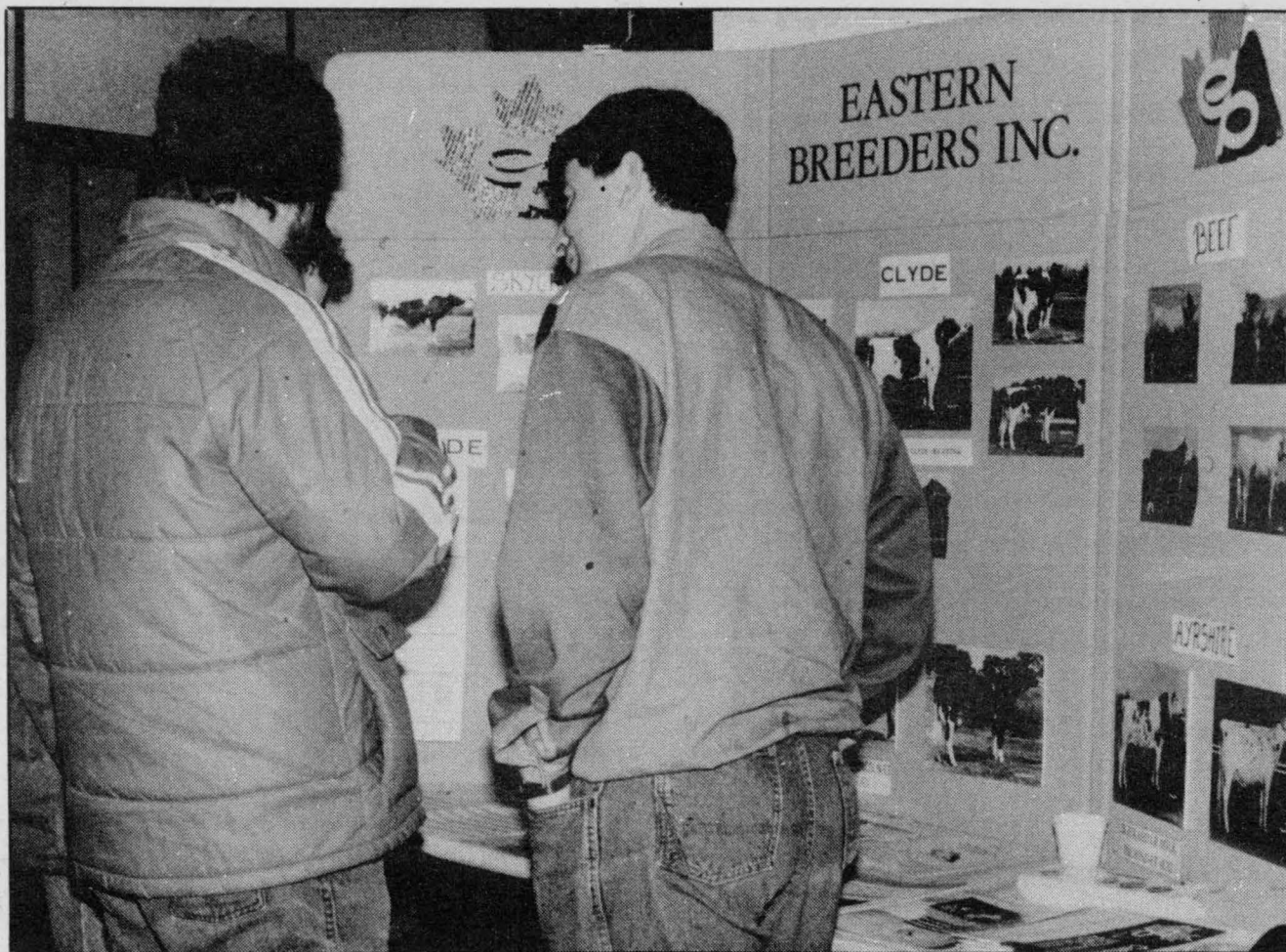
Leakage is the big concern with underground tanks. Clean-up of contaminated soil or water is expensive.

Most farm fuel storage tanks are above ground, due to cost. Farmers can easily check their own facilities for an approved Underwriters' Laboratory Canada (ULC) label.

Wiring of electric pumps is another common hazard with fuel tanks. Pumps must be hard-wired with explosion-proof fittings. Approved electrical wiring prevents contact of fuel vapors with anything that might spark.

Some tanks are placed on stands for gravity feed. Remember to check hoses frequently for weathering, since a rupture could result in a major fuel spill.

Diesel tanks should be at least three feet away from buildings, and 15 feet away from an opening to a building. Gasoline tanks must be no closer than 10 feet from a building, and also at least 15 feet from an opening. This is especially important if the tank is located near a workshop, where there are plenty of ignition sources!



Sire selection

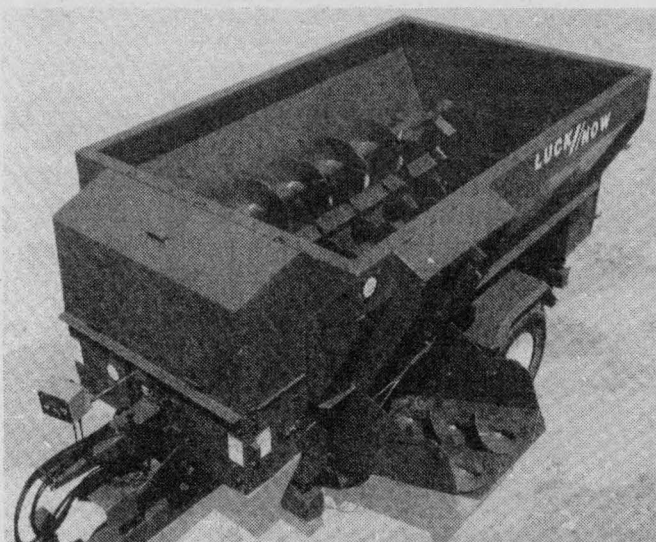
Some visitors to the recent Chrysler Farm Show look over material offered at the Eastern Breeders Inc. booth. More than 200 booths will

be featured at the Ottawa Valley Farm Show next week at Lansdowne Park.

Press Photo — Fetterly

Ron JOHNSTONE EQUIPMENT LTD.

Morewood Road, RR1, Winchester
448-3562



TMR Mixer

See us at Ottawa Valley
Farm Show, Booth 202 and 334

Service, Sales, Parts, Installation

- Natural Air Drying Systems
- High Moisture Liners
- Champion Roller Mills
- Hallman Silos
- Sukup Corn Drying Systems
- Val Metal Unloaders, Feeders
- Conveyors and TR Mixers
- Dynavent Barn Cleaners, Hook & Eye, Stackers, Hay Fans
- Brock, Westeel Bins
- Air Manure Push Pumps
- Steel Buildings
- Choretime Cattle Flex Feeding Systems and Augers
- Distrionic Feed Cars
- Wallinga Grain Pumps
- Van Dale Equipment
- Mix Mill Roast-a-Tron
- Roast-a-Matic Roasters
- Kuntz Hay Savers
- Seed Cleaning Equipment
- Seed Treaters, Baggers
- Elevator Legs
- Farm King (Allied) Augers and Cleaners
- Silo Car Feed Cart

LEASE PLANS
AVAILABLE

Grasshopper Gives You A Choice!

The 400 Mini Series

MODEL 411R MINI-HOPPER



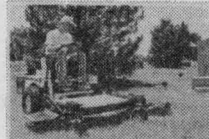
- 11 HP One-Cylinder Wisconsin Robin Sovereign OHV, Pressure Lube, Air-Cooled Gasoline Engine with Cast-Iron Sleeve.
- Dual-Hydrostatic Drive System.
- 35" or 41" Outfront PTO-Driven Decks.
- Optional Quik-D-Tatch Vac® Grasscatcher with either 4-cu.-ft. Pull-Out Container or 8-cu.-ft. Twin Slide-In Mesh Bags.

Compact design to pass through yard gates. Easy to store.



The Gemini 700 Series

MODELS 718/718K, 720 AIR-COOLED GAS



- Model 718 — 18 HP Twin-Cylinder Briggs & Stratton I/C Twin II, Pressure Lube/Oil Filter, Gasoline Engine.
- Model 718K — 18 HP Twin-Cylinder Kohler Magnum M18, Pressure Lube/Oil Filter, Gasoline Engine.
- Model 720 — 20 HP Twin-Cylinder Onan P220, Pressure Lube/Oil Filter, Gasoline Engine.
- Gemini Dual-Hydrostatic Direct Drive System.
- Low-Profile Decks — 44", 48", 52" and 61" Cutting Widths. 72" Deck Available on Model 720.
- Attachments — Grasscatcher (Two Styles), Dozer Blade, Rotary Broom, Snowthrower, ROPS, Cab Enclosure.

MODEL 721/725 LUBRICATED GAS



- Model 721 — 21 HP Kubota WG600-B Three-Cylinder OHV Gasoline Engine.
- Model 725 — 24.5 HP Kubota WG750-B Three-Cylinder OHV Gasoline Engine.
- 450 Cold-Cranking Amp Battery and Heavy-Duty Commercial Engine Air Filtration System.
- Gemini Dual-Hydrostatic Direct Drive System.
- Low-Profile Decks — 44", 48", 52", 61" and 72" Cutting Widths.
- Attachments — Grasscatcher (Two Styles), Dozer Blade, Rotary Broom, Snowthrower, ROPS, Cab Enclosure.

The Mid-Size 600 Series

MODELS 612/614 DIRECT DRIVE



- Model 612 — 12.5 HP, Model 614 — 14 HP Briggs & Stratton V-Twin OHV, Pressure Lube/Oil Filter, Air-Cooled Gasoline Engines.
- Advanced Dual-Hydrostatic Direct Drive System.
- Low-Profile 44" or 48" Outfront Torsion-Action Decks.
- Optional Quik-D-Tatch Vac® Grasscatcher with 8-cu.-ft. Twin Slide-In Mesh Bags.
- Other Attachments: Snowthrower, Multi-Purpose Blade.

Advanced dual-hydrostatic direct drive system provides smooth and efficient operation. The system incorporates integral filtration and reservoir diaphragm for cleaner operation and extended service life.

MODEL 721D LUBRICATED DIESEL



- 20.9 HP Kubota D722 Three-Cylinder OHV Diesel Engine.
- 450 Cold-Cranking Amp Battery and Heavy-Duty Commercial Engine Air Filtration System.
- Gemini Dual-Hydrostatic Direct Drive System.
- Low-Profile Decks — 44", 48", 52", 61" and 72" Cutting Widths.
- Attachments — Grasscatcher (Two Styles), Dozer Blade, Rotary Broom, Snowthrower, ROPS, Cab Enclosure.

McIntosh
EQUIPMENT LIMITED

3436 RIDEAU ROAD, RR 6
OTTAWA, ONTARIO, K1G 3N4



613-822-2252

Band spraying and inter-row cultivation

by Greg Millard,
Vernon Valley Farms

(From a speech given at Eastern
Ontario Farmers' Week).

BACKGROUND

My father and I cash-crop a farm just west of Vernon with a clay-clay loam soil. Some of the soil is a shallow muck (six inch) with a clay subsoil. Ninety-five per cent of the farm is systematically tiled at 60 foot spacings. Our crops consist of approximately 275 acres of corn, 100 of barley or wheat and 75 acres of soybeans.

We have tried to stick to a five-year rotation with three years of corn or soybeans and two years of barley or wheat underseeded with red clover. The two years of barley are not planted in consecutive years. The nitrogen from the plowdown can then be used by the following crop.

Our corn weed control program used to consist of a PPI treatment of Dual or Eradicane with 28 per cent UAN as the carrier. Once the corn was at about the one to two leaf stage a rotary hoe was used to control small broadleaf weeds and enhance the PPI chemical.

Approximately two weeks after, a post treatment of Banvel was used to control the second flush of broadleaf weeds. When the corn was a foot high a rolling cultivator was used. The cultivator was set to throw soil towards the corn to cover any escapes in the row. A few days after cultivation, a 28 per cent UAN applicator would sidedress the remaining nitrogen.

In the winter of 1992 with the outlook of corn prices not improving, we decided that our inputs must be reduced. Banding chemicals and combining operations into one trip were two ways to reduce cost.

SYSTEM DESCRIPTION

Planter: A 7000 JD Planter was modified to spray a 12 inch band over the 30-inch corn rows (pre- emerge). Wind hoods were installed to make sure that placement of the spray would not be affected by the wind. Trash wheels were placed in front of the units to remove any trash or clumps of soil that would interfere with the spray pattern. Spray solution was held in a three-point hitch mounted tank. A tank mix of Primextra Light (2.7 L/ac) and Lorox DF (0.45 kg/ac) was used in the band. Weed control in between the rows was strictly mechanically controlled.

Rotary Hoe: This was used just after the corn rows could be seen. This would look after the first flush of weeds. It would also enhance the banded chemical and break up any crust, if it occurred.

Cultivation Sidedress: These two operations used to mean two trips over the field. A 1,000 Hinker wide sweep high residue cultivator was used to combine these two operations. An applicator tank was pulled behind the cultivator and tubes underneath each sweep dribble the 28 per cent UAN on. Each corn row receives one band of 28 per cent UAN on each side approximately five inches from the corn.

COMMENTS

We will be staying with a 12-inch band, but this may be narrowed to 10 inches in the future. Pick your cleanest fields to begin your banding. Gain some experience before moving on to problem fields in later years. A crop rotation is a large part of banding. Considering the challenges of adapting to the new system and weather interruptions, band spraying was successful in 1992.

YIELD RESULTS:

	ROBINSON	MILLARD	McDIARMID	
Variety	P3921	P3902	K140	
Planted	May 11th	May 16th	May 11th	
Harvested	Nov. 30th	Nov. 15th	Nov. 14th	
Broadcast Program	Bladex Banvel	Eradicane Banvel	Cultivator & Atrazine	
BUSH/ACRE				AVERAGE
No Hoe 1 Cultivation	120.7	103.2	96.0	106.7
Rotary Hoe 1 Cultivation	112.5	104.6	96.5	104.5
No Hoe 2 Cultivations	121.6	110.7	96.5	109.6
Rotary Hoe 2 Cultivations	133.8	107.9	95.6	112.4
AVERAGE of Banded Treatments	122.2	106.6	96.2	108.3
Broadcast Treatment	121.8	109.2	105.4	112.1

(\$/acre)	Broadcast '91	Broadcast '92	Band 1992
Cultivating: PPI	\$10.50	\$10.50	\$10.50
- Dual 1L/acre	\$17.10	\$17.10	---
- UAN 55 lb./acre	\$14.85	\$14.85	\$14.85
Planting:	\$8.50	\$8.50	\$11.00
12" {Primextra Light 2.7 L/ac	---	---	\$ 7.81
Band {Lorox 0.45 kg./ac	---	---	\$ 3.66
Rotary Hoe	\$7.00	\$7.00	\$7.00
Spraying (Post)	\$6.00	\$6.00	---
Banvel 0.25 L/acre	\$6.00	\$6.00	---
Cultivation	\$8.00	---	---
Sidedress N	\$ 8.00	---	---
UAN - 75 lb./acre	\$20.25	---	---
Cultivate - Sidedress	---	\$11.50	\$11.50
UAN - 75 lb./acre	---	\$20.25	20.25
TOTALS	\$106.20	\$101.70	\$86.57
Prices:	28% UAN \$165/tonne Dual \$17.10/litre Banvel \$24.00/Litre Primextra \$7.23/Litre Lorox DF \$20.35/Kg		

Russtaal Drainage

Harold Staal

613-445-3360

P.O. Box 654, Russell, Ont., K4R 1E3

FREE ESTIMATES

Serving Eastern Ontario



NEW STORE NOW OPEN FOR BUSINESS



- Starter and alternator repairs
- Hydraulic hose and fittings
- Batteries
- Filters for tractors & highway tractors, etc.
- Replacement seats for tractors
- Touch-up paints and aerosols
- Welded sprockets and pulleys
- Belts, sizes A & B, for industrial, tractors, cars, trucks and equipment

For parts and service, see Steve

We Buy, Sell & Trade Daily

GIL BEAUDRY

BOX 550, WINCHESTER

613-774-3661 / 3662 / 3179 / 3606 / 2557

Farmer's Lung a debilitating disease

GOT A NAGGING COLD?

If you've been feeding hay — or working with other potentially moldy crop material — you should be very concerned about persistent cold- or flu-like symptoms. You could be suffering from farmer's lung — an allergy caused by dust from moldy hay, straw, grain, or other plant products.

If ignored, the allergic reaction can cause permanent lung damage. The victim may be forced to give up farming and — in some cases — may suffer from permanent disability, or even death!

Early diagnosis of farmer's lung is crucial to minimize lasting damage. If you suspect that exposure to moldy crop material may be responsible for respiratory problems, tell your doctor. Farmers who don't seek timely medical help could saddle their families with an invalid.

WHO IS SUSCEPTIBLE?

In most cases, the lungs' internal defense system removes fine mold dust before tissue damage can occur. A few individuals — estimated at less than 10 per cent of the farming population — develop an allergy to the material. Subsequent exposure triggers the immune system to work against the molds. Permanent scar tissue forms within the lungs.

Tissue damage increases with each exposure to the mold dust. Victims soon begin to notice that they are short of breath. At first, this makes strenuous work more difficult. Even routine tasks become too much to handle after frequent exposure. Eventually, a victim may find it a struggle to even get out of a chair.

NOT WORTH THE RISK

There is no way of knowing in

advance whether or not you will develop farmer's lung as a result of exposure to moldy crop materials. The only way to prevent this condition is to avoid contact with the moldy dust. While it is difficult to completely eliminate exposure, there are several measures that will help minimize the danger:

- Make sure that all crops are adequately dried before storage. Wet hay should be ensiled.
- Wetting down silos before uncapping, grain bins before cleanout etc., prevents moldy dust from becoming airborne.
- Provide as much ventilation as possible when working in dusty areas.
- Be sure to open bales that you know are moldy outdoors. Use a fork, instead of bending over the bale to open it with your hands.
- Mechanize feeding operations if economically feasible.

- A properly maintained toxic dust respirator provides excellent protection. (But don't use the respirator as an excuse for skipping other precautions!)

EARLY DIAGNOSIS IMPORTANT

Let's assume that you work in an environment that exposes you to moldy crop materials. If you develop a sudden illness within a few hours of handling the material, develop a chronic cough, or suffer from a general feeling of tiredness or depression, contact your doctor immediately. Be sure to let your physician know that you have been exposed to moldy dust.

Farmer's lung can be controlled, but it cannot be cured. With early detection, further lung damage can be prevented by avoiding contact with the molds. In severe cases, a victim will have to quit farming.

Fatigue

You've probably had the experience of working or exercising to the point that your body could no longer continue, and you had to rest. Fatigue may even affect the brain, but you may not recognize it as you do physical exhaustion.

When fatigue is due to physical work, typical results are muscle tightness and cramping. Work requires conversion of chemical energy to mechanical energy in the muscles. Blood flow and respiration must increase to supply muscles with required energy and oxygen, and to carry off carbon dioxide and chemical waste. When you work at a rate exceeding heart and lung capacity, aching in the muscles, cramping, tremor, and loss of control may result. To recover, you must stop to rest.

Muscle fatigue is like a safety device that prevents the tissue working beyond its capacity. Individual motivation (desire) plays a very significant role in determining this limit.

If you reach the limit and continue to work, you are more likely to make mistakes. Due to loss of muscular output and control, lessening of attention, slowdown of reactions, and loss of sensitivity, you could cause an accident. Exhausted legs may tremble and fail to operate the brakes. You may drop a load that you could normally lift and carry easily.

To avoid fatigue, take regular rest breaks. Frequent short pauses are more effective than longer breaks at wider intervals. Take extra breaks in the late morning and late afternoon.

(The above information was derived from the Deere & Company publication, "Agricultural Machinery Safety.")

TODS symptoms

Working with plant materials can produce another respiratory affliction, called Toxic Organic Dust Syndrome (TODS). It, too, is caused by exposure to very large amounts of dust.

TODS symptoms are identical to those resulting from an acute farmer's lung attack. However, TODS is not an allergic reaction.

While anyone can get TODS — and may become very sick from this condition — most people recover completely.



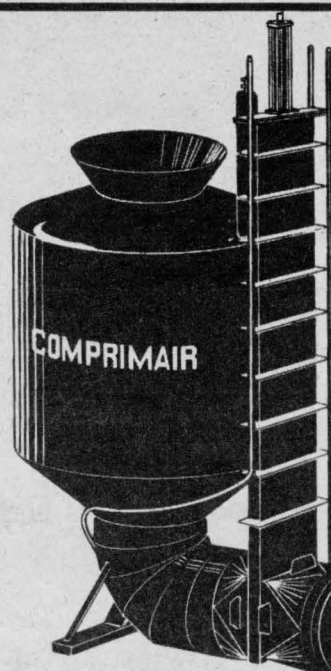
Bus.: 774-2720

Fax: 774-2921

WINCHESTER GRAIN ELEVATOR

Division of Parrish & Heimbecker Limited

P.O. Box 546, Winchester, Ont.
K0C 2K0



COMPRIMAIR

SAFER AND MORE EFFICIENT AIR PRESSURE
MANURE TRANSFER SYSTEM

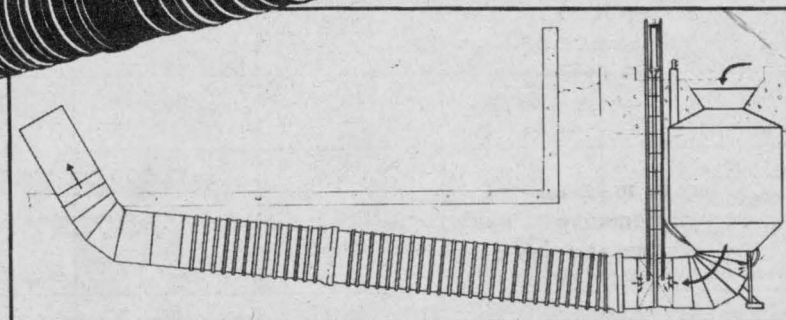
HOULE **COMPRIMAIR** features a positive guillotine located outside the holding tank preventing manure from returning into barn from storage.

SPECIFICATIONS

Compressor: 3 and 5 HP
Evacuation pipe: 24" and 30"
Tank: 1050, 1225 & 1500 Imp. gal
1300, 1525 & 1875 U.S. gal

HOULE
FARM EQUIPMENT MANUFACTURER

PLANTE FARM EQUIPMENT
BRINSTON, ONT. 652-2009





Winning entries

Some of the winning entries in the 36th annual SD&G Seed and Forage Show which was held in conjunction with the Chrysler Farm Show, March 2-4. The winning county entries will be competing in the Eastern Ontario Western Quebec Feed, Seed and Forage Championship Show next week in Ottawa. Press Photo — Fetterly

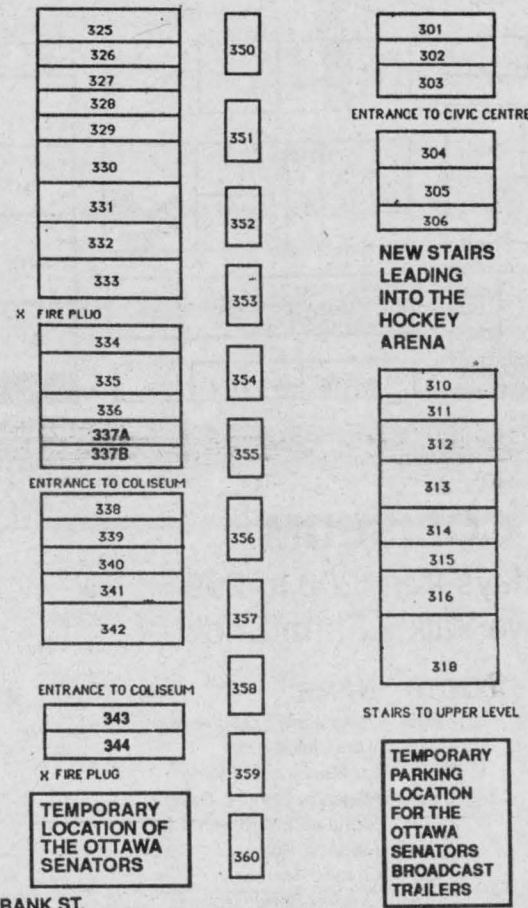
66th seed, forage show

The Ottawa Valley Farm Show will be the scene of the 66th annual Championship Seed, Feed, and Forage Show to be held at Lansdowne Park March 30, 31 and April 1.

The special guest of honor this year will be the Honorable Charles Mayer, Federal Minister of Agriculture, who is scheduled to address the winners and directors on Wednesday evening.

For the past 66 years seed growers have been competing in what has been designated as the championship show for Eastern Ontario and Western Quebec. Entries will arrive at Lansdowne Park on Monday to be judged and then placed on exhibit ready for the grand opening on Tues., March 30. The winners will be announced at the banquet on Wednesday evening.

Entries may be made only by the agriculture representative in the county or agronomer and should be sent to Terry Stewart, Ontario Ministry of Agriculture and Food, 315 Raglan Street, Renfrew, Ontario before 10am on Fri., March 26.



OUTSIDE EXHIBITS

Displays from 300 to 399
For the
Ottawa Valley
Farm Show,
Lansdowne
Park

NAME	BOOTH	NAME	BOOTH
Acres Equipment	325, 350, 351	McIntosh Equipment	340
Brett Equipment Sales	301-302	Norcan Farm Equipment	358
Claas of North America	336	Normand Co. Ltd.	339
Dundas Agri Systems	343	Nuhn Industries Ltd.	341, 359
E.R. Ladouceur	329	Ottawa Valley Farm Show	354
Eastern Farm Machinery	303	Ottawa Valley John Deere	305-306
Farmers Sealed Storage	352	Polydome Products	338
Holland Equipment	332	Ridley and Harris	357
Husky Farm Equipment	316	Robert H. Laning & Son	330
HWE Agriculture Technology	311	Sun, Wind and Fire	344
Ideal Machinery	342	Tensegrity Systems Ltd.	310
John Ernewein Ltd.	337A	Trailers Plus	355-356
Johnstone Equipment	334	Valley Sales and Service	304
Kubota Canada Ltd.	331	Van Beers & Blokland	326-328
Lapointe Drainage Ltd.	315	Weagant Farm Supplies	335
Les Equipements Agrico	312	Wood Mizer	333
Marelle Sales	313	Wrap-Rite Hay Systems	316

Weagant's Open House

at the Winchester Store

Wednesday, April 7

10am-2pm, Customer Appreciation Day



Be prepared for a hearty treat and some super specials.

- BIG MARKDOWNS ON
SELECTED MERCHANDISE
- SUPER LAWN & GARDEN
TRACTOR ATTACHMENT
DEALS

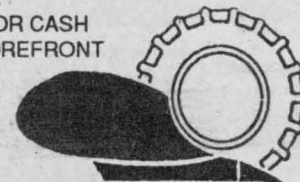
- WHILE THEY LAST, WE'LL BE
SERVING OKTOBERFEST
SAUSAGES ON A ROLL,
GARNISHED WITH RELISH OR
SAUERKRAUT
- THROW THE DICE FOR CASH
DISCOUNTS ON STOREFRONT
TOOLS & PARTS

WINCHESTER

774-2887

BROCKVILLE

342-0668

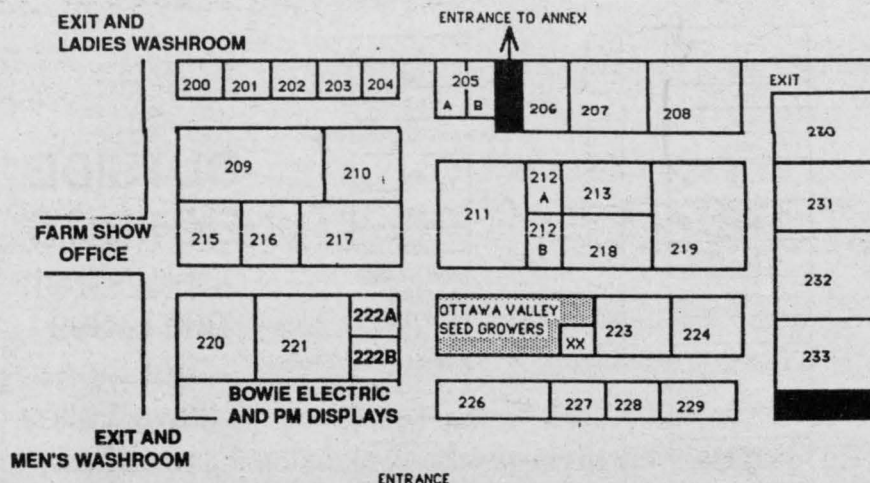


WEAGANT
FARM SUPPLIES



It's time to bring
out the grill and
turn those
Oktoberfest
sausages to a
golden brown.

DOOR
PRIZES



COLISEUM

Displays from 200 to 299
Ottawa Valley Farm Show

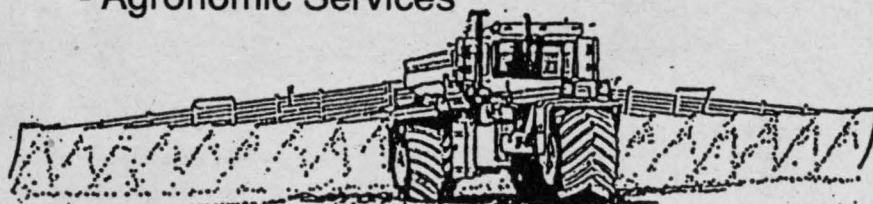
NAME	BOOTH	NAME	BOOTH
Aupry Silos	206	Johnstone Equipment	202
Babson Bros. Co. (Surge)	226	Kongsilde Ltd.	222A
Belarus Equipment of Canada	221	La Machinerie Ideale	213
Bluffton Agri/Industrial	214A	Metcalfe Service Centre	232
Brett Equipment Sales	204	Mohawk Equipment Ltd.	208
Canadian Cattlemen	Table	Monette Sales	212B
Cargill Hybrid Seeds	227	Ontario Farmer	228
D.D. Scissons Enterprises	212A	Ontario Seed Growers	205B, XX
D.F.K. Equipment Sales	224	Ottawa Valley Harvestore	231
Dundas Agri Systems	207	Ottawa Valley M.F.	209
Farmers Sealed Storage	216	Ottawa Valley Seed Growers	X, 205A
Hallman Silos (1981) Ltd.	203	Patz Sales Inc.	211
Harco AG Equipment	215	Superior Silo Inc.	200
Hardi Great Lakes	230	Syri Con Marketing	222B
Harold Row & Sons Ltd.	210	Val-Metal	218
Hawk Fence Supply	229	Vermar Farm Equipment	223
Hidden Pasture Ranch	214	W.R. Smale Co. (1979) Ltd.	219
Houle and Fils Inc.	220	Weagant Farm Supplies	233
J.K. Reid Mfg. and Sales	201	White-New Idea Farm Equipment	217

Agrico Winchester

Tel. 774-2209

CROP PRODUCTION SERVICES

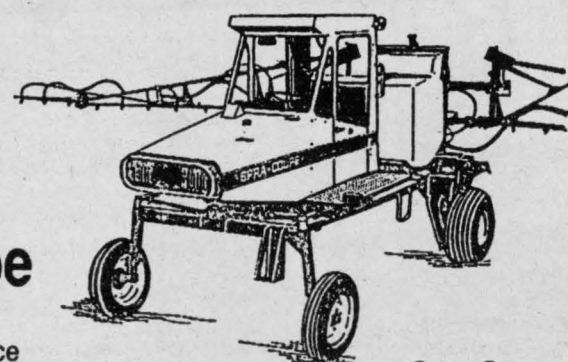
- Fertilizer, Lime and Tubrex
- Crop Protection Chemicals
- Custom "Accurate" Application
- Agronomic Services



Terra-Gator

Custom Spraying with our new Sprra-Coupe

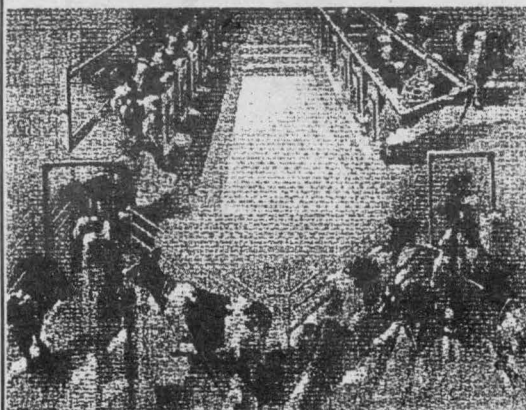
- Minimal tracking
- Accurate, timely service



Sprra-Coupe

**BE SURE TO SEE US
AT THE OTTAWA VALLEY FARM SHOW!!**

Building a new parlor or remodeling?



Xpressway Herringbone or Xpressway Parallel

- ✕ Exclusive exit reel controls cow traffic movement
- ✕ Designed for operator and cow comfort
- ✕ Choose the level of automation that's right for you.
- ✕ Installed and serviced by authorized Bou-Matic dealers

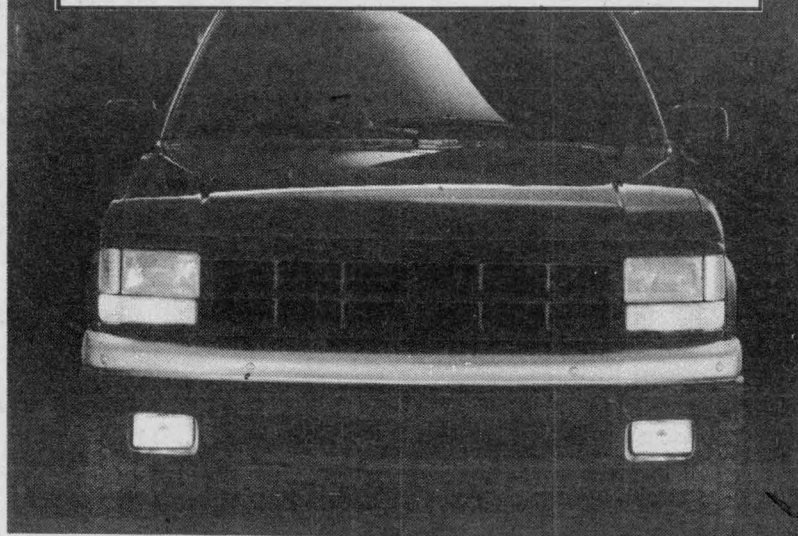
**For maximum cow throughput,
buy a Bou-Matic® Cow Traffic System**



BOUMATIC
DUNDAS
AGRI-SYSTEMS INC.
BRINSTON 652-4844

DODGE TRUCKS 1993 PICKUPS AND RAMCHARGER

\$1,000 **\$1,250**
Cashback on Dakotas Cashback on Full-Size
or 5⁹% financing (OAC, up to 48 months)



At BOYD'S



We've got you covered

Limited time offer. So come in today.

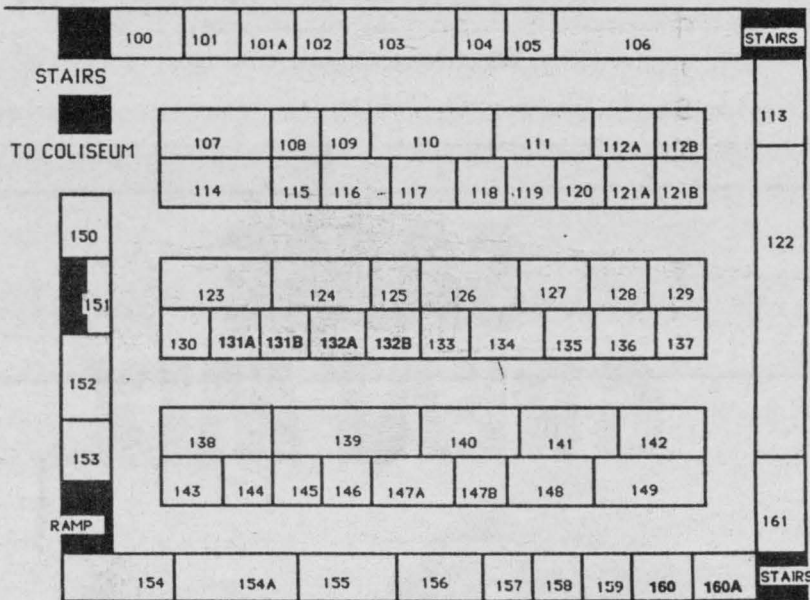
BOYD CHRYSLER

567 St. Lawrence St., Winchester 774-2520
Ottawa Direct 236-6505

WE JUST WANT TO BE THE



"Serving you since 1936"

ANNEXDisplays from 100 to 199
Ottawa Valley Farm Show

NAME	BOOTH	NAME	BOOTH
Agpro Software Inc.	119	Inland Plastics Ltd.	121B
Agrico Canada Ltd.	127	Jacques Canada Ltd.	142
Agrodrain Systems Limited	100	JAD Vent Distributors	156
Alpine Plant Foods Ltd.	125	Lavoie Farm Equipment	118
Bank of Montreal	150	MacDonald Feed Mill Ltd.	153
Bank of Nova Scotia	138	Masterfeeds	114
Barratt's Harness	120	Monsanto Canada Ltd.	152
BASF Canada Ltd.	158	Northeast Agricultural	112B
Campbell's Welding Service	161	Nutrite Inc.	145-146
Canadian Imperial Bank	141	Ontario Agriculture	160
Capital Welding	144	Ontario Federation of Agriculture	121A
Central Oxygen Ltd.	136	Ontario Hydro	110
Chem Agro	131A	Ontario Ministry of Agriculture	122
Ciba-Geigy	103-104	Ontario Mutual Insurance	130
Corland Seeds	109	Pickseed Canada Ltd.	123
Cynamid Canada Inc.	112A	Portable Seed Cleaning	108
Davis & Davis	147A	Pyramid Building Systems	102
Dekalb Canada Inc.	140	Ralph Dale Fertilizer	116
Delaware Pumps	106	Ralston Purina Canada	107
Diversey Inc.	159	Rideau Valley Conservation	101A
Dupont Canada Ltd.	147B	Royal Bank of Canada	126
Dynamic Drains Inc.	115	Shaw Concrete Grooving	101
E-Z-Brush and Oiler	105	Shoemate Orthotics	157
Ecolab Ltd.	154A	Shur-Gain	148
Eurotech Marketing Ltd.	154	Sommers Motor-Generators	117
Farm Business Consultant	155	South Nation River Conservation	151
Farm Credit Corporation	132B, 133	Sun North Systems	111
Farm Safety Association	128	Transfer Genetics	132A
Farm Toys	131B	United Co-operatives	139
Fritz Concrete	160A	Walinga Body and Coach	149
Gallagher Power Fencing	143	Westfalia Systemat	134-135
Harvex Agromart Inc.	113		
Haugh Equipment Ltd.	137, 129		
ICI Chipman	124		

SECOND FLOOR ANNEX

Buyers Guide

**JERRY CUMMINGS
PROFESSIONAL
AIRLESS PAINTING**

16 years of quality work
Walls and roofs of farm, commercial
and residential buildings
Painting Renfrew to Hawkesbury, Kingston to Lancaster

Phone 613-445-2982
For Free Estimates
RUSSELL, ONTARIO

**Embrun Dodge Chrysler
Jeep Eagle**

1025 Notre Dame St., Embrun, Ontario **443-0314**



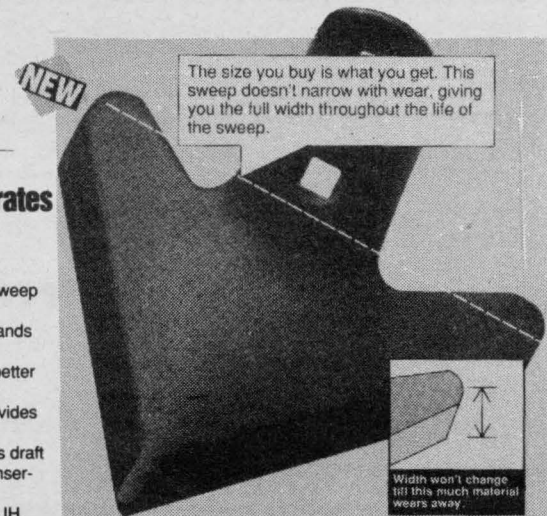
Ram Cummins 250 Diesel LE Club

SALES • LEASE • SERVICE • PARTS**REAL DOWN-TO-EARTH PRICES!****THE BIG SWEEP!**

Revolutionary Case IH
MAXXI-WIDTH™ sweep penetrates
faster ... and wears longer!

- New constant width design helps maintain original cutting width during the life of the sweep — gives you consistent overlap.
- "Double-strength" wraparound stem withstands loads over 2500 lbs.
- Heavy-duty, reinforced wear tip produces better penetration ... and protection.
- "Austempered" heat treatment process provides up to 19.2% more wear.
- Lower angle pitch means less tip wear, less draft and more residue — perfect for today's conservation tilling.
- Two stem widths available: 1 1/2" for Case IH and IH applications; and 1 3/4" for non-Case IH.

FREE HARDWARE...
with each sweep you
buy! A 65¢ value!



\$4²⁹
For Case IH
cultivators

7 1/2" Sweep
(1980641C2)
Reg. price \$6.81
Save \$2.52

Call Paul or Bill to pre-book Pancake Day parts orders.
Save time on Friday, March 26.

**Eagle Farm Equipment**

RR4, Winchester, Ont., K0C 2K0 on Hwy. 43, 1 1/2 miles east of Winchester
613-774-2677

case**FINALLY... A TRACTOR
THAT'S BUILT TO LAST.**

Now thru March 31st!

TROY-BILT® Tractor

\$2,399 Reg. \$2,799
SAVE \$400

12.5 hp Gear Model includes 36"
mowing deck worth \$489!

All Troy-Bilts on sale

TROY-BILT®

CT-11

Tom's
AIR COOLED ENGINES LTD.

Hwy. 31, Vernon
821-1060
SALES, SERVICE & PARTS

Store hours:
Mon.-Fri., 8am-6pm;
Sat., 8am-12 noon

Preventive maintenance essential for equipment

Very shortly, farmers will be getting their land ready for spring planting. Final preparations for the busy season ahead must soon be completed.

The number of optimum planting days is limited in much of Ontario. Time lost as a result of machinery breakdowns or inadequate planning can lead to undue rushing, a factor that increases the chances of a serious accident occurring. That's why we encourage producers to make ready for spring operations in advance — with machinery in top condition and fertilizer, seeds and chemicals ordered, the odds against major time losses improve.

By now, most 1993 crop production inputs will have been ordered. Have any items that will be needed this spring been overlooked? If so, they should be ordered immediately. Good planting days are no time to be rounding up a few bags of seed!

Equipment breakdown is the major factor contributing to lost time. Granted, there is no way of completely preventing machine breaks. However, by making sure that equipment is in top running order prior to major use, the probabilities of breakdown are substantially reduced.

Preventive maintenance is the key to maximum productivity and safe machinery operation. Ideally, growers should follow a maintenance schedule that covers every piece of equipment used in their farming operations.

Accidents are most likely to happen when:

- Machines are out of adjustment.

- Worn or broken parts haven't been replaced.

- Cutting edges are dull.

- Shields and other safety devices are not in place and functioning properly.

Maintenance operations require close attention to manufacturers' service schedules and instructions in owner's manuals. When planning a service program, determine which repairs you can effectively carry out.

If you have doubts about certain operations, it may be wise to leave major servicing to the dealer. He should have the parts, tools, equipment, and time to take care of any service requirement.

Regardless of who is to do the work, it is vital that it be completed before the spring rush. Neither growers nor dealers want to spend time on major overhauls when land is ready for planting.

Routine maintenance shouldn't be neglected during the peak use period. A few minutes spent checking fluid levels, belts, hoses, etc., before starting up each morning could save hours or even days later on.

Will you be hiring extra help this spring? If so, the workers will need to be informed about basic safety rules. Employees should know what is expected of them, and must understand how to carry out their duties efficiently and safely.

Time spent now on planning last minute details represents an important step toward safer, more productive farming.

Business Telephone (613) 774-5708

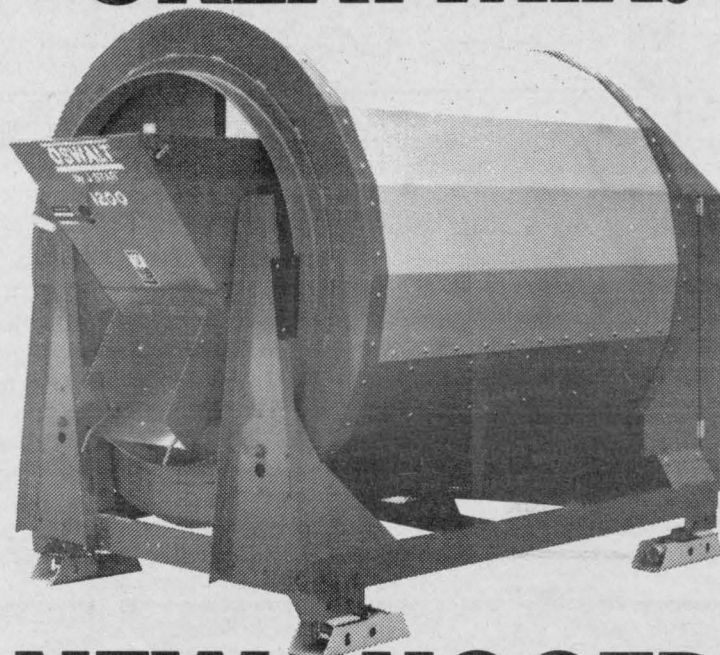
Campbell & Stewart Equipment Repair Inc.

RR 1, Winchester, Ontario, K0C 2K0

Murray Campbell, Res. 774-3065

Wilson Stewart, Res. 774-3160

SAME GREAT MIX.



NEW RUGGED "1000" SERIES DESIGN.

Oswalt Polygon Mixers have long been known for their superior, fast-action horizontal "waterfall" mixing action. Better mixing means a better quality ration — and a better return for your money.

Four new "1000" Series models (70-200 cu. ft. capacity) also feature a rugged, dependable design. Like sturdy A-frame front structural supports. A choice of stainless steel or copper-bearing steel drums. Reliable J-STAR electronic scales. And "1000" Series drive.

See your Oswalt dealer and find out everything that's new with the "1000" Series Polygon Mixers.

OSWALT®
Mixers by J-STAR

G & J YELLE INC.
CRYSLER
613-987-5336



Masterfeeds

Black's Feed Store

Box 670, Chesterville, Ont., K0C 1H0 448-2161

HERFKENS
SERVICE CENTRE

Farm Equipment Service
Air Conditioning Service

Repairs to all makes
and models of farm
equipment at very
affordable prices

**NOW
is the time
to get your
equipment
field ready**



Please Call or Stop in
For Estimates

"WE ALSO CARRY BATTERIES FOR ALL NEEDS"
SHOP (613) 987-2824 HOME (613) 984-2497
RR #3 Crysler, Ont. K0A 1R0

Controlling white mold in bean plants

by Tom Hartman, OMAF, PIB
(From a speech given at Eastern Ontario Farmers' Week.)

White mold is a soilborne disease, caused by the fungus *Sclerotinia sclerotiorum*, that can occur on all aerial parts of the bean plant (stems, branches, leaves, flowers and pods) and in postharvest environments. The affect of the disease on bean yield and quality varies considerably but losses of 100 per cent have been reported in Ontario.

Disease development is favored in seasons with warm, humid weather and in bean fields with a dense canopy (cool surface temperatures) and a history of the disease.

SYMPTOMS

Symptoms usually first observed on flowering parts as small, circular green watersoaked lesions that expand rapidly on blossoms and into adjacent tissue. Flower petals that drop onto stems, petioles, leaves, pods, other plant parts, and soil act as sources of infection.

Lesions enlarge and under moist conditions a white, cottony growth of fungus (mycelium) develops. This is followed by the production of hard, black bodies (sclerotia) in and on infected tissue. Infected parts dry out and have a characteristic bleached pale

brown to white appearance. Pods that are infected but lack symptoms can cause substantial losses to stored beans.

DISEASE CYCLE

The fungus overwinters in soil and crop residues as sclerotia which can survive for five or more years. Sclerotia, in the top five cm of soil germinate and produce small spore-producing structures (apothecia) on the soil surface during growing season. Spores become airborne and infect senescing flowers during periods of prolonged wetness (two to three days). Spores can remain viable for up to two weeks on plant surfaces. Infected flower parts that fall onto other plant parts can infect healthy tissue and spread from one plant to another.

CONTROL

Resistance to white mold has not been incorporated into presently available white bean cultivars but certain cultivars (ex. Ex Rico 23) appear to demonstrate tolerance to the disease.

All varieties are rated for the disease in the registration trials and results are printed in the table in Pub 296, Field Crop Recommendations. Cultivars that have an upright growth

pattern tend to be less affected by the disease (less contact between plants).

Soybeans varieties too vary in their susceptibility to white mold but are generally less susceptible than white beans.

Crop rotation utilizing nonhost species, such as corn and cereals, reduces the levels of the fungus in the soil. Reducing the initial inoculum levels is difficult because of the incredible host range for *S. sclerotiorum* (over 383 species). The fungus can survive on other hosts or be dispersed by wind, insects (ex. bees), and through surface run-off.

In no-till situations, where the sclerotia are left on the soil surface,

the half-life is about one-and-a-half years. Therefore, we tend to see lower inoculum levels as long as the rotation remains extended.

Foliar fungicides have provided inconsistent control. For effective control, foliar sprays must be applied at first bloom, prior to the appearance of disease.

Application rates, weather conditions and other management factors are critical. Sprays applied after the disease first appears do not control white mold effectively. For these reasons fungicides will no longer be recommended in Publication 296, *Field Crop Recommendations*, for white mold control.

FORD NEW HOLLAND
CREDIT
Makes it easy to own the best.

- Farm
- Industrial
- Lawn & Garden



Erik 445-2899

**ERIK THERKELSEN
& SONS LTD.**
SALES AND SERVICE

551 Castor Street, P.O. Box 254, Russell, Ontario

BUSINESS: 613-445-2818

Chris 445-5761

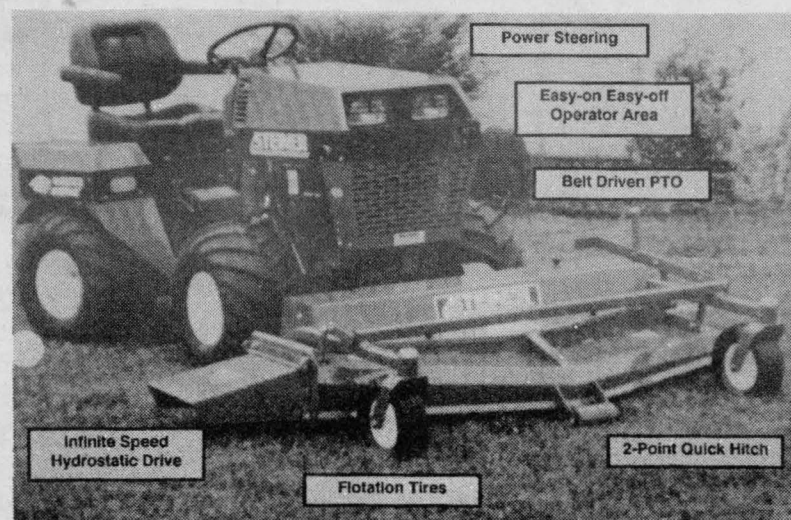
Not just another mowing machine...

The Original
4-Wheel Drive Steiner
Keeps Getting Better

STEINER SPECS

MODEL 420

4 x 4 TRACTOR



Infinite Speed
Hydrostatic Drive

Flotation Tires

2-Point Quick Hitch

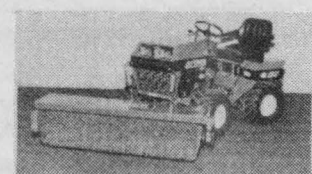
Power Steering

Easy-on Easy-off
Operator Area

Belt Driven PTO



SS230 Slip Scoop



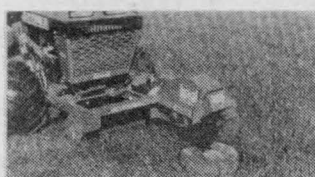
RS350 Rotary Sweeper

A FULL LINE OF FRONT MOUNTED ATTACHMENTS INCLUDING:

Rotary Mowers ...up to 72"
Triplex Reel Mower
Power Angle Blade
Boom Mower
Power Blower
Disc Edger
Snow Blower
Rotary Sweeper
Aerator
Sand Trap Blade
Stump Cutter
Chipper / Shredder
Slip Scoop
Tiller
Front End Loader



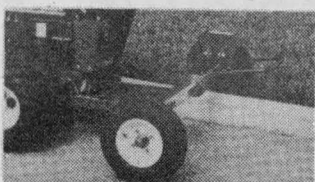
CB420 Cab and BD260 Power Angle Blade



SC101 Stump Cutter



PB100 Power Blower



DE160 Disc Edger



AR140 Aerator



LD300 Front End Loader

- The Steiner 4-wheel drive tractor is designed with the user in mind. From the rugged industrial frame to the operator controls the tractor is ready for demanding turf and grounds care assignments.
- Power steering and articulating frame, combined with a low center of gravity and high flotation tires, provide exceptional maneuverability.
- Fully hydrostatic, single lever control lets you choose infinite ground speeds to match the task. No clutching, jerking or braking, just smooth power to the 4 full time drive wheels for added traction in tough areas. 2-speed transaxles allow a choice of "HIGH" or "LOW" range.
- Front mounted attachments offer a wide range of working tools and all of them attach to the "Quick Hitch" that is a Steiner exclusive. The front hitch is standardized for all models of Steiner power units, so your present Steiner attachments are not obsolete.
- You can do many tasks with this one tractor, compared to higher priced single purpose machines, by simply changing attachments in less than 2 minutes.
- Operator safety and comfort, power, performance and dependability will provide years of enjoyment with your Steiner tractor.

McIntosh
EQUIPMENT LIMITED

3436 RIDEAU ROAD
RR6, OTTAWA, ONTARIO, K1G 3N4
613-822-2252

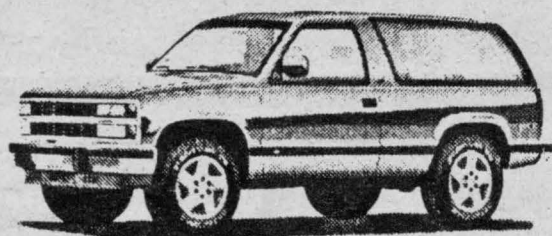
MARCH - TRUCK MONTH

**MARCH
AWAY WITH
GREAT
SAVINGS!**

AT
**UPPER
CANADA**

**HURRY
SALE ENDS
APRIL
9 /93**

SELECTION AT ITS BEST!



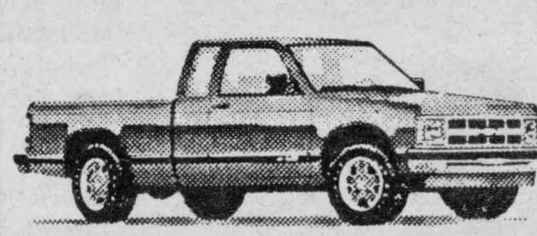
1993 FULL SIZE BLAZER 4x4

Fully Equipped
Retail - \$31,173⁰⁰
Sale Price - \$28,900^{00*}



1993 S BLAZER LT

4 Dr., 2 Wheel Dr. (2 to choose from), Fully Equipped, Incl. Power Lumbar Seat
Retail - \$24,356⁰⁰
Sale Price - \$22,900^{00*}



1993 S 10 PICKUP LONG BOX

V6, Auto., Tahoe Package
Retail - \$15,010⁰⁰
Sale Price - \$14,200^{00*}



1993 LUMINA APV

7 Passenger, Loaded, 3.8 Litre V6, Power Seat, Fully Equipped
Retail - \$24,697⁰⁰
Sale Price - \$22,100^{00*}



1993 ASTRO EXT.

4.3L V6, Auto., Air, Tilt & Cruise, Rear Heater, Deep Tinted Glass, 2-Tone Paint, Recliner Bucket Seats, Dutch Door, Rear Defroster
Retail - \$23,543⁰⁰
Sale Price - \$20,200^{00*}



1993 1/2 TON WORK TRUCK PICKUP

V6, Auto., AM-FM Radio, Bedliner, P235 Tires & More
Retail - \$16,887⁰⁰
Sale Price - \$15,295^{00*}

Also In Stock Good Selection of 4x4 Full Size Pick-ups, Long Box & Short Box Fleetside & Stepside, Extended Cab - Short Box 4x4 & 2 Wheel Drive, Suburban, 2 Wheel Drive, S Blazer 4x4 LT

* Includes Freight, P.S.T., G.S.T., Lic. & DOC Fees, \$60.00 Extra Cash Rebate Assigned To Dealer

See Us For All The Details!

Darryl McDonnell

Jim Notman

Barry McMillan

Kirk McMillan

543-2925 543-3680

933-8892

UPPER CANADA MOTOR SALES LTD.



Geo

**CORNER OF HWY. 2 & 31
MORRISBURG 543-2925**

Oldsmobile